

Democratic Consolidation, Unionization,
and Growth-Enhancing Structural Change:
Evidence from South Korea and Taiwan*

Nam Seok Kim[†]

January 1, 2024

Abstract

Re-allocation of labor from less productive sectors to more productive sectors is essential for economic growth. Since only some developing countries achieve productive labor re-allocation, it is important to address its determinants. This paper focuses on the role of unionization in structural change in South Korea and Taiwan whose unionization proceeded rapidly after democratization. I provide detailed dynamics by constructing an index for the degree of unionization for each sector in each region of these two East Asian democracies. The magnitude of growth-enhancing structural change was lower when a sector in a region had a higher degree of unionization. In other words, if a sector had higher labor unionization, the size of the increase in its employment share from the productivity premium was lower. These findings suggest that the institutional properties represented by unionization can affect the dynamics and growth implications of structural change.

Keywords: structural change, labor union, productivity, growth, democratization, democratic consolidation, South Korea, Taiwan

JEL Codes: O43, O47, J5, P52

*I am extremely grateful to Devashish Mitra, Badi Baltagi, Abdulaziz Shifa, Leyla Karakas, and Gary Engelhardt for their very helpful comments and suggestions. I have also benefited from constructive comments by Almas Heshmati, Priyaranjan Jha, Mary Lovely, and Ryan Monarch. Seminar participants at Cornell 100 Years of Economic Development, Jönköping University, KIEP, Corvinus University of Budapest, ADB, KLI, and KDI allowed me to improve this paper. All errors are my own. The standard disclaimer applies.

[†]Korea Institute for International Economic Policy (KIEP). Email: nskim@kiep.go.kr or nam-seok19kim@gmail.com. Address: Room 225, Building C, Sejong National Research Complex, 370, Sicheong-daero, Sejong-si, South Korea (Postal Code : 30147)

1 Introduction

A fundamental challenge in achieving rapid and sustained economic growth is ensuring that labor flows rapidly from sectors with lower productivity levels to sectors with higher productivity levels. Rodrik et al. (2017) termed this challenge a ‘structural transformation challenge’. Some countries succeeded in overcoming this challenge during their development period. However, many other countries were not successful in attaining productive re-allocation of labor. Understanding what decides the success and the failure in handling this challenge is very important because it can explain the cross-country heterogeneity. This paper suggests that labor unionization is related to the speed and magnitude of productive labor re-allocation.

Labor unions’ increased bargaining powers affect the rigidity of the labor market through multiple channels, including wage levels, wage dispersion, and employment levels. As section 2 discusses, there have been ample theoretical elaborations and empirical clarifications which support the relationship between unionization and labor market outcomes. However, despite its significance, unionization has received limited attention in existing empirical literature on structural change. Among many possible reasons for this, two main difficulties have been preventing economists from studying this aspect. First, for most countries, information on sector-specific rigidity, such as sector-level union density or collective bargaining coverage, is often not available. Second, most measures are from recent periods for fully developed countries, and they have limited variations in union density and collective bargaining coverage across different periods and sectors.

This paper overcomes these empirical difficulties by quantifying the degree of unionization for each sector in each region of two East Asian new democracies. I focus on the Republic of Korea (South Korea) and the Republic of China (Taiwan), whose democratization was followed by a significant increase in the labor’s bargaining power. In particular, labor unions had both quantitative and qualitative growth in the two countries during their democratic consolidation process. Labor unions have gradually attained more bargaining power in rep-

resenting workers since the democratization in the two nations. In addition to time-series variations in unionization, there were also both sectoral and geographical variations in the degree of unionization during the democratic consolidation process. These variations in unionization in multiple dimensions allow me to identify the marginal effect of unionization clearly. To exploit this variation in labor rigidity and bargaining power, I construct sector- and region-specific indices for the degree of unionization in both countries. I use the variations in these indices to empirically examine the dynamics of structural change by following the analytic framework suggested by McMillan and Rodrik (2011) and Rodrik et al. (2017). If a sector with higher productivity attracted a greater employment share, then we can say that the economy went through growth-enhancing structural change. On the other hand, if a sector with lower productivity attracted a greater employment share, it can be termed growth-reducing structural change. This paper finds that labor rigidity, represented by the degree of unionization, explains the heterogeneous magnitude of growth-enhancing structural change.

This paper specifically considers 7 sectors in 17 regions of South Korea and 10 sectors in 25 regions of Taiwan. The analysis covers all geographic areas in South Korea and most of the areas in Taiwan. Data for South Korea starts in 1989, while that for Taiwan starts in 1992, both immediately after democratization in the two countries. The sample for South Korea ends in 2019, and that for Taiwan ends in 2018. Government reports used for constructing the unionization indices are published by the Ministry of Employment and Labor of South Korea and the Ministry of Labor of Taiwan. For Taiwan, the regional distribution of labor union members is tracked by every local government. Sectoral value-added and employment in each region are used for measuring productivity, which varies across both sectors and regions, where productivity is defined by the real value-added per worker. Both countries' official national accounts and sectoral surveys are primary sources of data on value-added and employment in this paper. As Taiwan's official statistics are not announced annually, I interpolate annual variation using the Economic Transformation Database (De Vries et al.

2021) constructed by the University of Groningen.

Using the geographically disaggregated sectoral data from South Korea and Taiwan, this paper tests two key hypotheses. First, I test whether South Korea and Taiwan went through growth-enhancing structural change. McMillan and Rodrik (2011) and Rodrik et al. (2017) suggest some stylized facts on country-specific experiences related to growth-enhancing and growth-reducing structural change. However, while they provide an overall conceptual framework and present aggregated trends using cross-country data, they do not fully explore the dynamic nature and path dependence of structural change. Therefore, to provide much more robust empirical findings, this paper uses geographically disaggregated sectoral data and implements dynamic panel data estimation in testing this first key hypothesis. The second key hypothesis is whether the degree of unionization explains the heterogeneous magnitude and speed of structural change. This is a novel contribution of this paper. By using dynamic panel data estimators, I estimate that the magnitude of growth-enhancing structural change varies with different degrees of unionization.

I find that both South Korea and Taiwan experienced growth-enhancing structural change during the sample period. In other words, a sector with higher productivity attracted more labor share in both nations. This finding from the first hypothesis is consistent with the stylized facts about the economic growth of South Korea and Taiwan suggested by Rodrik et al. (2017). Efficient re-allocation of labor allowed South Korea and Taiwan to sustain rapid economic growth until recently. However, the size of growth-enhancing structural change was smaller for sectors with higher unionization, that is, the increase in the employment share coming from the productivity premium became smaller if a sector in a region encountered higher bargaining powers of labor. Higher labor rigidity due to stronger bargaining powers of labor decelerated the growth-enhancing structural change in South Korea and Taiwan. According to these findings of the second hypothesis, the institutional characteristics of the labor market represented by the degree of unionization can affect the speed and magnitude of a productive re-allocation of labor.

One of the main implications of these findings is that, after a fundamental regime change in the labor's bargaining powers attained by democratization, the two countries no longer enjoyed quick and immediate labor re-allocation as per productivity. Given that their authoritarian regimes tried to maintain the high flexibility of labor market until democratization, this paper's findings suggest that the lower rigidity of labor can be recognized as one of the critical determinants of rapid economic growth during authoritarian periods in the two countries. In addition, because quick labor re-allocations according to the growth-enhancing structural change became slower after democratization, it was natural for these new democracies to focus more on within-sector growth rather than structural growth. This transition to the more significant share of within-sector growth is supported by productivity growth decomposition using the sample from South Korea and Taiwan.

The rest of the paper is organized as follows. The next section discusses related literature. It clarifies the relationship between unionization and labor rigidity by providing vital mechanisms for interpreting the empirical findings. Section 3 introduces the background of the labor unions and labor movements in South Korea and Taiwan. It focuses on how labor unions evolved along with the democratic transition in these two countries. Section 4 introduces data, and Section 5 discusses econometric specification. Then I interpret estimation results and robustness checks in Section 6 and Section 7, respectively. This paper concludes after a discussion of the analysis of the labor productivity growth decomposition in Section 8.

2 Related Literature

This paper studies structural change as a change in employment share across different sectors in an economy. The conceptual framework of structural change analysis and its implications for economic growth are suggested in McMillan and Rodrik (2011), McMillan et al. (2014), Rodrik et al. (2017), and Diao et al. (2019). A structural change is defined as a growth-

enhancing structural change if the relative productivity of a sector is positively correlated with a change in its employment share, that is, if a sector with higher productivity attracts a bigger employment share, then an economy goes through a growth-enhancing structural change. Symmetrically, a structural change is defined as growth-reducing structural change if the relative productivity of a sector is negatively correlated with the change in its employment share. Based on this definition, McMillan and Rodrik (2011) and Rodrik et al. (2017) classified country-specific cases.¹ If a growth-enhancing structural change happened during economic growth, it means that the labor force re-allocation was consistent with the sectoral distribution of productivity. By having a larger employment share, a sector with more productivity was able to accelerate its expansion to contribute more to the national economic growth.

De Vries et al. (2015) applied this framework of structural change on cross-country evidence from African nations. Ahsan and Mitra (2017) studied determinants of sectoral change in employment share in Indian states. Mcaig and Pavcnik (2017) and Firpo and Pieri (2017) discuss the overall trends in structural changes and their growth implications in Vietnam and Brazil, respectively. Mueller et al. (2019) and Atta-Ankomah and Osei (2021) focus on evidence from Ghana. Relatively, there has not been any exclusive focus on East Asian countries in literature. Also, stylized facts on countries in different continents are largely based on highly aggregated and limited information. My detailed analysis with disaggregated panel data from South Korea and Taiwan provides a further dimension for understanding this aspect.²

Diao et al. (2019) developed a simple two-sector general equilibrium model to explain differences in the growth implications of structural change between African and Asian na-

¹They focused on the growth-enhancing structural changes in Hong Kong, Thailand, and India. The works also discussed the growth-reducing structural changes in Argentina, Brazil, Nigeria, and Zambia.

²McMillan and Rodrik (2011) found that, in South Korea and Singapore, the structural changes were not growth-enhancing during 1990 - 2005. However, they suggest that the very rapid 'within' productivity growth was big enough to offset the negative role of structural changes in economic growth. My geographically decomposed analysis of data on labor unionization suggests one of the possible mechanisms behind this. This is discussed in detail in Section 8.

tions. Martinez-Bravo and Wantchekon (2021) conducted a comprehensive literature review on the relationship between structural change and political institutions. Martinez-Bravo and Wantchekon (2021) emphasized why institutional distortions can explain the misallocation of resources and consequent differences in sectoral productivity, which is the main driving force of structural change. My analysis makes a relevant contribution by articulating the role of labor unionization in explaining the direction and magnitude of structural change.

Unionization affects wage levels, changes in employment, and wage dispersions. Consequent labor market outcomes due to unionization can determine the acceleration or deceleration of structural changes. Seminal theoretical predictions are made in literature on the collective bargaining of labor unions. Nickell and Andrews (1983) considered a labor union that represents all workers in the labor pool. Nickell and Andrews (1983) suggest a contract curve whose wage is an increasing function of the labor's bargaining powers while the employment level decreases when bargaining powers increase. McDonald and Solow (1981) derived equilibrium where wage and employment are decided simultaneously. Booth (1995a) expanded the discussion towards a broader contract, which includes wage and unemployment benefits. Both McDonald and Solow (1981) and Booth (1995a) predict that the wages will be increased whenever the labor's bargaining power is strengthened. McDonald and Solow (1981) clarify that employment levels increase when the unions' bargaining powers increase, while Booth (1995a) expects that the employment levels will not be affected by the bargaining powers of the labor unions. The insider-outsider approach such as by Lindbeck and Snower (1988) relaxes the assumption on labor unions' representation so that it can accommodate more realistic circumstances. As unemployed workers are usually excluded from the bargaining process, it assumes that the unions only represent the utility of employed workers.³

³Building on this assumption, Lindbeck and Snower (1988) consider bargaining whose contract includes the wages of union members (insiders) and the wages of future entrants (outsiders). The insider-outsider approach also accommodates the case when the median voter in a democratic union is a worker with relatively high seniority. Senior workers' preference is likely to be different from that of newly hired workers with less seniority, especially in terms of attitudes towards additional hiring. Newly hired workers can actually be regarded as outsiders when the union's median voter has considerable seniority. Therefore, the interests of

Along with this theoretical elaboration of the effect of unionization on wages and employment, empirical approaches have also discussed stylized facts. A large group of empirical studies support the wage premium of unionized workers predicted by theoretical literature.⁴ Recent developments in the regression discontinuity allowed DiNardo and Lee (2004), Sojourner et al. (2012), and Frandsen (2012) to provide alternative understandings on the causal relationship between unionization and wage premium. According to these papers with regression discontinuity analysis, narrowly elected labor unions do not always have a significant impact on wages. However, stronger unions with clearly more than 50 percent support do have a statistically significant wage premium.⁵ Like theories expected mixed directions of the change in employment levels after unionization, empirical evidence also provides a mixed impact of unionization on employment.⁶ Along with these empirical findings on wage and employment levels, a notable pattern is that the wage variance in a sector decreases when the sector has higher unionization. This is often interpreted as reduced wage inequalities after unionization.⁷

In sum, the positive impact of unionization on wages is explicit in both theoretical and empirical research. When workers are more unionized, firms encounter a higher barrier in hiring more workers because of the existence of the union wage premium. Consequently,

newly hired workers will not be reflected in the negotiated contract. Lindbeck and Snower (2001) provide a broader survey on this.

⁴According to Lewis (1963, 1986), Card (1996), Hirsch (2004), and Sojourner et al. (2012) unionized workers enjoy statistically significant wage premium in the United States. Booth (1995b) identified union wage premium in the United Kingdom. Dell’Aringa and Lucifora (1994) and Lemieux (1998) found a positive impact of unionization on wages in Italy and Canada, respectively. Blanchflower and Freeman (1992) and Blanchflower and Bryson (2003) studied cross-country evidence of union wage premium. Blanchflower and Bryson (2003) found that the union wage premium was around 12 percent on average in 17 countries.

⁵Cahuc et al. (2014) summarize with deeper arguments on regression discontinuity analysis on the relationship between unionization and wage.

⁶The negative relationship between unionization and employment has been identified in Brown and Ashenfelter (1986), Card (1986, 1990), Abowd and Kramarz (1993), Kahn (2000), Sojourner et al. (2012), and Frandsen (2012). On the other hand, a positive relationship between unionization and employment level is found by Abowd (1989). Nickell and Wadhvani (1990), Boal and Pencavel (1994), and DiNardo and Lee (2004) did not find any systematic patterns between unionization and employment levels.

⁷Freeman and Medoff (1984), Blau and Kahn (1999), and Frandsen (2012) identified that unions compressed the wage distribution in the United States. Rowthorn (1992), Blau and Kahn (1996), and Kahn (1998, 2000) found that wage inequalities were negatively correlated to the labor union density using cross-country data from OECD countries.

immediate expansion in hiring coming from higher business profitability is less likely to happen when the bargaining power of the labor unions improves with higher unionization. This mechanism can be the key channel where unionization can affect the speed and direction of structural change.

The concept of the ‘development state’ (or the developmental state) has been widely used in explaining the economic success of two East Asian countries during the late 20th century. A development state is a regime that could sacrifice many aspects to guarantee economic growth. Political freedom or civil society were sacrificed for economic development in these two East Asian countries. In addition, sacrificing a specific sector in terms of resource allocations was also done to boost another sector. The manufacturing sector enjoyed abundant resources, including both labor and capital, because the key mechanism in the two nations’ growth strategies was promoting exports in the manufacturing sector (Wade, 1990 and Haggard, 1990). The manufacturing sector got the most attention from authoritarian politicians in both South Korea and Taiwan. Thanks to rapid economic growth due to successful implementation of this development strategy, authoritarian politicians were able to justify their rules for decades.⁸

In addition to the political economy approach, macroeconomists also contributed to an understanding of country-specific cases in East Asia. Lucas (1988, 1993) emphasized the importance of human capital accumulation through learning by doing. The channel of learning by doing was highly correlated with their industrial policies. At the beginning of their industrialization, if it were not for the government’s interventions, the manufacturing sector would not have been able to attract enough economic factors of production. Even though

⁸Amsden (1989) and Woo and Woo-Cummings (1991) elaborate on the experience from South Korea. Woo and Woo-Cummings (1991) revisited the role of financial interventions by the Korean government that allowed the manufacturing sector to get a stable capital allocation. Wade (1990) provides a Taiwan-specific understanding which focuses on the synergy between public administration and the market. Even though it is hard to classify the Japanese government during its rapid economic growth as an authoritarian regime, Japan’s experience is also similar to the experience of its neighbors. Johnson (1982) suggests that Japanese economic growth can be largely explained by Japan’s efficient utilization of the Ministry of International Trade and Industry (MITI). MITI had a strong influence on the financial sector to mandate resource allocations according to the country’s industrial policy.

workers in the manufacturing sector were not productive enough initially, learning by doing which became feasible due to government interventions, improved their productivity.⁹ Feenstra et al. (1999) tested endogenous growth in South Korea and Taiwan. The authors support endogenous growth mainly in secondary industries while endogenous growth is weakly identified in primary industries.

The overall relationship between institutional properties and the economic outcomes has been widely studied by both theoretical and empirical approaches. The role of democracy (or democratization) in economic outcomes has become a testable topic since the methodological developments on longitudinal panel data. Barro (1996, 1997), and Tavares and Wacziarg (2001) point out the possible negative relationship between democracy and economic growth. Recent empirical findings are more concentrated on the positive relationship between democracy and economic development. Preworski and Limongi (1997), Rodrik and Wacziarg (2005), Persson and Tabellini (2007), Papaioannou and Siourounis (2008), and Acemoglu et al. (2019) focus on economic growth as the left-hand-side variable.¹⁰ They estimate the positive relationship between the two, which can be considered empirical support for Lipset's (1960) discussion of modernization theory.

However, these findings should be understood as an overall static pattern across different continents and different periods, which can be dissimilar to country-specific dynamic trends. The concept of democratization in existing cross-country panel data findings does not successfully imply the dynamics of democracy. In new democracies, even though democratization is attained, it takes several decades or more for them to consolidate the democracy. For example, in the case of labor representation, which this paper focuses on, the legalization of the democratic labor union confederation was attained twelve years after the democrati-

⁹Both countries had a fragile foundation for manufacturing after their independence. Therefore, considerable reliance on the agricultural sector was an underlying feature until they started industrialization. Even though it was evident that the two countries' comparative advantages did not lie in the manufacturing sector, their governments decided to specialize in manufacturing to attain comparative advantage in manufacturing within a few decades.

¹⁰Acemoglu et al. (2019) go further to the causal relationship by implementing both dynamic panel estimation and causal inference.

zation in South Korea, and nine years after the democratization in Taiwan.¹¹ Therefore, when and how the democratic political process is consolidated after democratization needs to be considered if an economist wants to do a detailed analysis of the impact of democratization on economic outcomes. Some new democracies consolidate democratic institutions sooner while others do not.¹² This paper incorporates this aspect by considering the dynamic process of structural change after democratization. Because the development of labor unions was one of the important aspects of the democratic consolidation in South Korea and Taiwan, identifying how unionization is related to sectoral re-allocation provides some implications which have not been discussed in detail yet.

3 Democratization and Labor Unions in South Korea and Taiwan

This section discusses the country-specific surroundings of labor unions in South Korea and Taiwan. It discusses why labor unions' increased bargaining powers after democratization can be interpreted as increased rigidity of labor in the two countries. Along with the two countries' institutional backgrounds, this section also discusses detailed descriptive statistics such as labor union density and labor-management dispute cases. Most importantly, how the power of labor unions evolved during the democratic consolidation process provides the key motivation for this paper.

South Korea and Taiwan went through democratization after they started rapid economic growth. The average annual real gross domestic product (GDP) growth rate in the 1970s

¹¹In line with this, Samuel Huntington's democratic consolidation criteria point out the second power shift as the critical point of democratic consolidation because new democracies gradually make progress towards well-functioning democracies for at least several decades. This is often called the two-turn-over test for democratic consolidation (Huntington (1991)). According to Preworski (1991), a democratic system is consolidated when the democratic political process is considered a unique, accessible process for political power.

¹²It is also true that we can see some reversals of new democracies towards non-democratic regimes. Acemoglu et al.'s (2019) dichotomous democracy measure contains both democratization and its reversal.

was 10.3 percent in South Korea while it was 10.8 percent in Taiwan in the same period.¹³ If we consider the first direct and democratic election for the presidency (or general elections in a parliamentary government system) as the critical point of democratization, South Korea was democratized in 1987 and Taiwan in 1996. But many researchers consider earlier years (mostly 1991 or 1994) as Taiwan's critical point of democratization. This is mainly because Taiwan's transition towards a democratic political system was relatively gradual as compared to South Korea. The oppressive political system managed by the authoritarian regime was no longer sustainable in the late 1980s in both countries with accumulated wealth and human capital.¹⁴

Protests for labor rights and the labor movement provided a major impetus throughout the democratization and its consolidation in both countries. Labor unions were under the direct control of the government during the authoritarian regimes in South Korea and Taiwan. There were many trials to establish autonomous and non-authoritarian labor union confederations during the rule of dictators. However, this was not attained till democratization. Even after democratization, the most prominent representative and autonomous labor union confederations were not legalized during the earlier years of democratic governments. The legalization of these confederations was finally accomplished in 1999 in South Korea and in 2000 in Taiwan. These years are critical for the liberalization of the labor movement in the two countries.

Even though South Korea and Taiwan share many similarities in institutional backgrounds and economic reforms, differences in the role of labor unions in the labor market in the two countries should be considered carefully. In addition, the labor union acted differently in the democratization movements. During the authoritarian regime, the labor movement in South Korea was much more militant and radical than that in Taiwan. This is linked to the fact that the dictatorial regime in Taiwan was much more responsive and

¹³Source : Penn World Table, RGDPNA.

¹⁴Among recent reviews on East Asian democratization, Yap (2011) and Slater and Wong (2013) provide a comprehensive comparison between South Korea Taiwan.

strategically sophisticated so the ruling power could control citizens' demands flexibly. Dictators in South Korea had an oppressive attitude towards democratization movements and labor unions during most of the authoritarian periods.

3.1 Labor Unions and their Development in South Korea

During the South Korean authoritarian period until 1987, there was only one representative and comprehensive federation of labor unions in the nation. The Federation of Korean Trade Unions (KFTU) was a unique labor union confederation that was legally identified by the South Korean authoritarian regime. Even though it served as a channel between employees and employers in Korea during that period, it is true that KFTU can be understood as a government-organized labor union confederation. Therefore, during this authoritarian period, the labor movement through KFTU was considerably far from those in fully democratized nations. It was natural for many activists and motivated workers to request an independent labor union confederation which was supposed to be free from the authoritarian regime's control. Even though the labor movement outside the KFTU channel was regarded as an illegal activity, efforts for an independent labor union confederation were broadly supported by many citizens and workers. These efforts for an independent and democratic union federation are often called as the 'Democratic Union Movement', and it was finally institutionalized in 1988 after democratization was attained.¹⁵

The newly-organized democratic confederation of the labor union, the Korean Confederation of Trade Unions (KCTU), was first organized in 1988 as a representative confederation of democratic labor unions.¹⁶ KCTU became the new center for radical and progressive labor movements even though it was not legally accepted when it was first organized. KCTU was recognized by the labor union law in 1999, and it gained equal status with KFTU. After democratization, KFTU also went through considerable changes and reforms in its movement

¹⁵South Korea joined the International Labour Organization (ILO) in 1991.

¹⁶It started with a different name (National Committee for Camps in Labor Union Movement) in 1988 and changed its name to the National Committee for Labor Union Movement in 1990. Its current name, KCTU, became its official name in 1995.

and transparency. Even though it is true that KFTU was not as radical as KCTU, KFTU became democratic and independent of the government pressure by the time its counterpart, KCTU, was consolidated. In 2021, KFTU accounted for 42.2 percent of the labor union members in South Korea, while KCTU had 41.3 percent of the labor union members.¹⁷

KCTU's legalization allowed the progressive labor movement in South Korea to be liberalized and protected by law in 1999. Official statistics on labor-management dispute cases reflect that the legalization had a considerable impact on workers' claims toward employers. The 3-year annual average of labor-management dispute cases before KCTU's legalization (1996 - 1998) was 97. However, the 3-year annual average of labor-management dispute cases immediately after the legalization (1999 - 2001) was 227. Employees had to take the risk of joining illegal confederations for progressive movements before the legalization. Incorporating KCTU in the legal system removed this risk and employees started actively pursuing basic and fundamental rights as workers in 1999.

3.2 Labor Unions and their Development in Taiwan

Similar to the case of South Korea, in Taiwan, only one umbrella confederation of labor unions had legal status during the authoritarian regime. The Chinese Federation of Labor (CFL) served as a legitimate confederation which included county-level (or city-level) federation of unions. Even though CFL did not have a direct impact on industrial and occupational unions within a county-level federation of unions (Huang (2002)), regional-level federations had very close ties with the ruling party (Kuo Min Tang, KMT) during the authoritarian regime.¹⁸ Therefore, the formation and legalization of a new autonomous labor union confederation was the main goal of the labor movement's activists during this period. One of the main strategies of this 'new labor confederation movement' which turned out to be efficient in Taiwan, was having close connections with politicians of the opposing parties

¹⁷According to Ministry of Employment and Labor's aggregation announced in December 2022.

¹⁸Elected union officials usually belonged to occupational unions whose leaders tended to be members of (or have close ties with) the KMT. See Huang (2002) for more details.

(the Democratic Progressive Party (DPP), for example). This enabled them to be active in regions where DPP had more support than KMT. This also made main DPP politicians, such as Shui-bian Chen, promise the legalization of a new independent labor union confederation. Shui-bian Chen became the winner in the presidential election after democratization in 2000 and he implemented the new trade union law in 2000.

Following the new trade union law, since 2000, there have been three labor union umbrella confederations. Along with CFL, there are the Taiwan Confederation of Trade Unions (TCTU) and the National Federation of Labor (NFL). TCTU was established in 1999, and it explicitly opposed the former trade union law. Compared to CFL's close ties with the former authoritarian party KMT, TCTU has close ties with DPP. The new trade union law recognized this autonomous and independent confederation that was free from KMT's rule in 2000. NFL was also organized in 2000. CFL's pro-KMT activists left CFL after they lost power in CFL and organized NFL. Based on these dynamics and the evolution of Taiwanese labor confederations, we can say that Taiwanese labor unions after 2000 can do a lot more than those before 2000. The 3-year annual average of labor-management dispute cases before the legalization of TCTU (1997 - 1999) was 4214. However, the 3-year annual average of labor-management dispute cases right after legalization (2000 - 2002) was 10999. A more active and liberal labor movement started in 2000 because members of TCTU were no longer under legal constraints after its legalization.

3.3 Variations in the Unionization

Even though Taiwan was able to attain democratization a bit later than South Korea, the two countries share almost the same year (1999 and 2000 for South Korea and Taiwan, respectively) as the critical point in labor union liberalization. Since the rapid economic growth in the two countries, Taiwan has been keeping a considerably higher union density rate than South Korea. For example, in 1990, which is near the beginning point of my sample period for the baseline analysis, South Korea's overall labor union density rate was

17.4 percent, while that of Taiwan was 43.3 percent. In 2000 and 2015, South Korean density rates were 11.4 percent and 10 percent, respectively, which were still similar to that in 1990. South Korean labor union density sharply increased after democratization in 1987, but it decreased again during the economic reforms caused by the economic crisis in 1997. On the other hand, the Taiwanese overall labor union density rate was 38.5 percent in 2000, and it was 33.4 in 2015. Even though Taiwan's labor union density rate also decreased considerably after 1990, the gap between the two countries was relatively constant until recent years.

Though the density rate may indicate that Taiwan has been managing more motivated and active labor unions compared to South Korea, cautious attention is required when researchers directly compare the labor union density between these two countries. Even with Korea's low aggregate labor union density, it is well known that the labor union movement in South Korea was very militant and well-organized compared to other East Asian nations. In the early 1980s, the Taiwanese government significantly relaxed the process of licensing newly established occupational unions, and many Taiwanese citizens, working or not, joined occupational unions to acquire health insurance because unions acted as one of the main platforms for health insurance. This implies that pooling and estimating cross-country samples with labor union density rate observations can be misleading because each country's labor union density rate sharply varies depending on its institutional background. This is the main reason I implement separate estimations for the Korean and Taiwanese samples in this paper. Implementing two samples together in a single estimation will contain systematic differences in the unionization rate between the two countries, leading researchers to get misleading variations.

However, within a nation, variations in the labor union density successfully represent heterogeneity in unionization. There are two sources of heterogeneous unionization in South Korea and Taiwan. First, spatial heterogeneity exists across different provinces and regions in both countries. In South Korea, the labor movement has been keeping close ties with left-wing political parties. Regions with broader support for left-wing parties have had

a systematically higher participation in labor unions. Given that South Korea has deep-rooted regionalism in its politics, labor unions in left-wing dominant regions formed a broader organizational foundation than unions in other regions. Similarly, in Taiwan, regions with more left-wing support had higher participation in labor movements and consequent higher union density. Southern regions centered in the Kaohsiung area started being the hub of left-wing activities in the late 1970s. It was natural for activists to gather together in the southern area and work together under the goal of the democratic labor union confederation. The southern area's broader support for the anti-authoritarian party DPP helped the labor movement thrive more in this region than in other parts of the nation. Second, sectoral heterogeneity is explicit in each country. Different sectors had different circumstances for the labor movement. Especially in the formation of labor unions, some sectors had more favorable conditions than others. Sectors whose workers worked together within an indoor workplace, such as the manufacturing sector, were likely to have a faster and broader formation of unions. As both countries experienced a rapid expansion of their economies through the manufacturing giant firms with huge production complexes, the manufacturing sector led the unionization. On the other hand, the agricultural and service sectors have a lower density rate than the manufacturing sector. My unionization index, which will be discussed in the next section, successfully catches these heterogeneities.

4 Data

This section describes data sources and the variables used in the empirical analysis. The first subsection describes how I construct the index for the degree of unionization, which varies across different regions and sectors. The second subsection includes information on the spatial and sectoral distribution of workers. Value-added data for deriving productivity is also discussed in the second subsection. The third subsection discusses the descriptive statistics.

4.1 Degree of Unionization

The degree of unionization is one of the key variables which allows this paper to study the consequences of democratic consolidation in labor institutions. Throughout the empirical analysis in this paper, the degree of unionization explains the structural change measured by the changes in employment share. The best measure for the degree of unionization without any measurement error can be constructed by the population list of every labor union in the country along with its magnitude, location, and sectoral affiliations. However, most developed countries do not share the population list mainly due to related privacy laws. Instead, South Korea and Taiwan provide an annual report with sector-level aggregates of labor unions (both number of members and number of unions). Yearly reports in South Korea also contain the geographical distribution of labor union members. In the case of Taiwan, local governments share the total number of unions and members so that the geographical distribution of labor union members can be constructed. The annual report is published by the Ministry of Employment and Labor in South Korea. In Taiwan, the Ministry of Labor and each local government provide related information.

Using the publicly available information, I consider the degree of unionization, $Unionize_{ijt}$, for each industry i in the region j in year t as below.

$$Unionize_{ijt} = \left\{ \frac{L_{jt}^u}{L_t^u} \times L_{it}^u \right\} / L_{ijt} \quad (1)$$

where L^u stands for the number of members in the labor union. L_{jt}^u/L_t^u quantifies the region j 's share of labor union members among the total number of labor union members in year t . L_{it}^u is the sectoral level of labor union members. It is aggregated based on the number of members in industrial labor union confederations of South Korea and Taiwan. Industrial labor union confederations are umbrella confederations according to each industry which is more disaggregated than the sector. For example, there are confederations for the textile industry and car production industry which are classified as the manufacturing sector. By

multiplying L_{jt}^u/L_t^u and L_{it}^u each other, $Unionize_{ijt}$ can reflect both sector-level variations and geographical variations in the degree of unionization. Dividing by L_{ijt} , the total number of employees in each sector of the region in year t , leads us to get $Unionize_{ijt}$ which is a normalized proxy for the degree of unionization.

The $Unionize_{ijt}$ in equation (1) can be also understood as the penetration or permeation of the industrial labor union in region j . In $Unionize_{ijt}$, the aggregated sector-level distribution of union members (L_{it}^u) is distributed according to region j 's share of labor union members (L_{jt}^u/L_t^u). This means that, in constructing $Unionize_{ijt}$, I'm not making further adjustments based on region j 's industrial structure.¹⁹ The national industrial structure reflected in L_{it}^u is equally distributed based on region j 's share of labor union members in the index for the degree of unionization. Even though it will not be precisely equal to the actual labor union density rate of each sector in each region, the equation (1) reflects cross-country differences between the two nations and within-country variations, as emphasized in the subsection on descriptive statistics.

In classifying 10 sectors i , the 10-sector classification given in Table 1. However, due to the sectoral classifications in regional value-added information in South Korea, the actual number of sectors used in the estimation for the sample from South Korea is 7 sectors (Table 2). For the same reason, the empirical analysis with the first 12 years of Taiwanese data uses nine sectors while estimation with later years since 2004 use all information in 10 sectors. $Unionize_{ijt}$ is available in Korea²⁰ since 1980 while it is available in Taiwan since 1992.²¹

¹⁹Under the assumption of $(L_{jt}^u/L_t^u) = (L_{ijt}^u/L_{it}^u)$, equation (1) will be exactly equal to the actual labor union density (L_{ijt}^u/L_{ijt}).

²⁰Seventeen regions in South Korea used in my estimations are Seoul, Daejeon, Daegu, Busan, Gwangju, Incheon, Ulsan, Gyeonggi, Gangwon, Chungbuk, Chungnam, Sejong, Jeonbuk, Jeonnam, Gyeongbuk, Gyeongnam, and Jeju. These regions form the unbalanced panel data.

²¹For Taiwan, 25 regions used in my estimations are Changhua county, Chiayi city, Chiayi county, Hsinchu county, Hualien county, Kaohsiung city, Kaohsiung county, Keelung city, Miaoli county, Nantou county, New Taipei city, Taipei county (until 2010), Penghu county, Pingtung county, Taichung city, Taichung county, Tainan city, Tainan county, Taipei city, Taitung county, Taoyuan city, Yilan county, Yunlin county, Kinmen county, and Lienchiang county. These regions form unbalanced panel data.

4.2 Value Added and Employment

When the productivity of each sector i in all regions j is attained, the data on the value-added and employment should be decomposed into each sector-region pair. Statistics Korea, the statistics bureau funded by the government of South Korea, provides yearly decomposition. Korean Statistical Information Service (KOSIS) manages a data series²² which includes the yearly sector-region decomposition of the real value-added. KOSIS also provides the Economically Active Population Survey that contains the annual number of employees in each sector in each region. Using these two data sources, one can obtain the annual panel time series of value-added and employment in South Korea's 7 sectors in 17 regions from 1989 to 2019. 17 regions cover every geographical location in South Korea. The classification of sectors used for Korean data is clarified in Table 1 and Table 2.

Taiwan's national statistical agencies make sector-region decomposition of value-added and employment in every five years. All sectors except the agricultural sector are covered by the National Statistics of the Republic of China's Industry and Service Census. The Industry and Service Census includes the geo-sectoral distribution of both value-added and employment. During the period when $Unionize_{ijt}$ is available, the earliest Industry and Service Census was conducted in 1996. In the case of the agricultural sector, Agriculture, Forestry, Fishery and Animal Husbandry Census (AFFA census) contains region-level employment. The AFFA census is also conducted every five years and the first census was conducted in 1995. As the AFFA census does not provide the distribution of value-added, I use the distribution of cultivated land area in retrieving the geo-sectoral share of value-added.

Because the sector-region decomposition is only feasible every five years, proper interpolation is needed using attainable time-varying information. The Economic Transformation Database published by the University of Groningen suggests the yearly sum of sectoral real value-added and employment. The national level of sectoral real value-added and employment is multiplied by the geo-sectoral share from the Industry and Service Census and AFFA

²²Regional Income Statistics

census. The share of each census is implemented to four neighboring years so that I can fully interpolate. For example, the sector-region share of 2011's Industry and Service Census is used for interpolating data for 2009, 2010, 2012, and 2013. The agricultural sector goes through the same interpolation process using the AFFA census.

4.3 Descriptive Statistics

Table 3 includes the descriptive statistics of the key variables. In order to correctly represent the sample of the empirical estimation, observations in Table 3 are restricted to those used in the baseline estimation. The estimated sample covers the period from 1989 to 2019 for the South Korean economy and from 1992 to 2018 for the Taiwanese economy. The $Unionize_{ijt}$ of South Korea has 7.9 percent as the sample average, while that of Taiwan has 44.4 percent as the sample mean. According to the International Labour Organization (ILO), the average labor union density in South Korea during 2000 - 2015 was 10.36 percent; for Taiwan, it was 39.78 percent union density on average during the period when ILO covered Taiwanese information in 2004 - 2010. Based on these population means provided by ILO, we can see that the sample means of $Unionize_{ijt}$ for South Korea and Taiwan successfully reflect the overall degree of unionization in both countries.

As I clarified in defining equation (1), $Unionize_{ijt}$ is not exactly equal to the actual labor union density. It can be exactly equal to the actual labor union density only when the assumption $(L_{jt}^u/L_t^u) = (L_{ijt}^u/L_{it}^u)$ holds. Due to the restrictions on the feasibility of data, I construct $Unionize_{ijt}$ by utilizing proxies which can lead to $Unionize_{ijt} > 1$. The regional distribution of total labor union members is multiplied by national aggregates of industrial labor union members to measure the degree of penetration of industrial labor unions in each region. In the South Korean sample, less than 1 percent of the observations have $Unionize_{ijt}$ with higher values than one. On the other hand, in the Taiwanese sample, around 11 percent of the observations have $Unionize_{ijt}$ with higher values than one. As introduced in section 3, this stems from the fact that Taiwan has systematically higher union density due to

its links with health insurance. Members of labor unions in Taiwan include unemployed workers because they still need union membership for their health insurance benefits. This fundamental factor is related to having big values of $Unionize_{ijt}$ which are higher than one at around 11 percent in the Taiwanese observations. Even though $Unionize_{ijt}$ successfully measures the within-country variations in unionization, I implement various alternative ways to fix these higher values of $Unionize_{ijt}$ in Taiwan. They are introduced in the section on robustness checks (section 7).

The variations in $Unionize_{ijt}$ within a nation is consistent with the geographical and political properties of the two nations. Gwangju has been the center of left-wing activities with continuous and steady support from citizens and voters. In 1996, for example, Gwangju's manufacturing sector had 0.21 as the value of $Unionize_{ijt}$. However, other major cities had significantly smaller values, such as 0.10 in Seoul and 0.08 in Daegu. Sectoral heterogeneity is also considerable. The trade services sector (WRT according to Table 1 and Table 2) in Gwangju had a value of 0.003 for $Unionize_{ijt}$ in 1996, and government or personal services sector (PUBO according to Table 1 and Table 2) in Gwangju had a value of 0.06 in the same year. Compared to the manufacturing sector's value (0.21), these two sectors have a significantly lower degree of unionization. Similar patterns with higher $Unionize_{ijt}$ for progressive areas and manufacturing sectors are observed across other sectors and other regions in South Korea. Likewise, $Unionize_{ijt}$ reflects geographical and political variations within Taiwan. Kaohsiung county has a systematically higher value of $Unionize_{ijt}$ compared to other regions such as New Taipei City. It reflects that Kaohsiung county has been hosting broader support for progressive political movements compared to the national average. The manufacturing sector in Taiwan also tends to have a higher degree of unionization measured by $Unionize_{ijt}$ compared to other sectors such as the trade services sector (WRT).

Notations given in Table 3 are used in all consequent sections of this paper. θ_{ijt} is the employment share of sector i of region j in year t ($\theta_{ijt} = L_{ijt}/L_{jt}$). The consequent first-difference ($\theta_{ijt} - \theta_{ijt-1}$) is denoted as $\Delta\theta_{ijt}$. p_{ijt} is the annual productivity measure of each

sector-region pair ij . I simply quantify p_{ijt} by having $p_{ijt} = V_{ijt}/L_{ijt}$ where V_{ijt} stands for the real value added. V_{ijt} is represented by the local currency unit in millions.²³ Therefore, p_{ijt} can be called as the real value added per worker of the sector i in region j in year t . I construct relative productivity using the overall productivity of region j , P_{jt} . Symmetrically, it can be expressed as $P_{jt} = V_{jt}/L_{jt}$. The relative productivity of sector-region pair, p_{ijt}/P_{jt} , indicates how each sector i in region j is relatively productive compared to the overall aggregated productivity of region j . In both South Korea and Taiwan, the sample average of p_{ijt}/P_{jt} is slightly bigger than one according to Table 3. Relative productivity can have a negative value because the value added is sometimes measured as negative. The minimum value of p_{ijt}/P_{jt} is negative in Taiwan while it is positive in South Korea.

5 Econometric Specifications

Based on the dynamic nature of the structural change and institutional backgrounds of the two countries, I suggest a dynamic panel data model which can test some key hypotheses. Two of them are of main interest for this paper. First, based on the conceptual framework suggested by Rodrik et al. (2017), I test whether structural changes in South Korea and Taiwan were growth-enhancing structural change or growth-reducing structural change. If the relative productivity has a positive marginal effect on a change in the employment share, we can say that growth-enhancing structural change is identified. On the other hand, if the marginal effect is negative, it can be interpreted as growth-reducing structural change during the sample period. The second hypothesis, which gives the political-economic implications, is about the role of the degree of unionization in explaining the structural change. Unionization can accelerate the speed of the structural change while it can also decelerate the speed of structural change. The interaction term between relative productivity and the unionization index allows testing whether unionization decelerates growth-enhancing structural change. Given these motivations, I consider the following dynamic panel data estimation.

²³Won in South Korea and Taiwan Dollar in Taiwan.

$$\begin{aligned} \Delta\theta_{ijt} = & \beta_0 + \sum_{a=1}^d \beta_{1a} \Delta\theta_{ijt-a} + \beta_2 \frac{P_{ijt-b}}{P_{jt-b}} + \beta_3 Unionize_{ijt} \\ & + \beta_4 \frac{P_{ijt-b}}{P_{jt-b}} \times Unionize_{ijt} + \mu_{ij} + \lambda_t + \nu_{ijt} \end{aligned} \quad (2)$$

where all the key notations follow those in section 4. Individual heterogeneity across sector-region pair ij is addressed by the fixed effect μ_{ij} . The time-specific effect is represented by λ_t while ν_{ijt} accounts for the remaining stochastic term.

The change in employment share in sector i in region j , $\Delta\theta_{ijt}$, is explained by its lagged variables $\sum_{a=1}^d \beta_{1a} \Delta\theta_{ijt-a}$ in this framework. I sequentially add further lagged dependent variables based on the validity of instrumental variables for GMM where $1 \leq a \leq 4$. The key test statistics for model specification are the AR test and an over-identification test so that I can make sure that Arellano and Bond's (1991) instrumental variables for the endogeneity coming from $\sum_{a=1}^d \beta_{1a} \Delta\theta_{ijt-a}$ are valid instruments. If the diagnostic tests give us satisfactory confidence about the validity of the instrument, I implement $\Delta\theta_{ijt-a-1}$ and its further lags as instrumental variables. The first order AR tests such as AR(1) should reject their null hypotheses to justify the dynamic panel specification. At the same time, the higher order AR tests should not reject the null hypothesis. Because adding further lags as an instrumental variable in Arellano and Bond (1991) allows us to have an over-identification test, I follow the Hansen-type robust test statistics (Hansen (1982)).

By having a set of lagged dependent variables on the right-hand side of equation (2), I can test the path dependence of structural change measured by a change in employment share. Also, unobserved determinants of $\Delta\theta_{ijt}$ will be controlled by both lagged dependent variables and fixed effects. By following the transformation suggested by Arellano and Bond (1991), the first-difference method handles the heterogeneities of each sector-region pair. For the sample of South Korea, according to the diagnostic specification tests (AR test and over-identification test), the preferred value of d in equation (2) is $d = 1$ while it is $d = 4$ in the Taiwanese sample. The $d + 1$ th-year lag of the dependent variable and a set of its

further lags are used as instrumental variables. Other types of dynamic panel estimators, including Anderson and Hsiao's (1982) first-difference estimator, two-step GMM estimator, and system GMM estimator are discussed in the section for the robustness checks (section 7).

Relative productivity is added as a lagged variable in equation (2). This is mainly due to the fact that $\Delta\theta_{ijt}$ and p_{ijt}/P_{jt} may share a simultaneity issue. The current relative productivity might be affected by the contemporary change in employment share because productivity can evolve based on the shifts in the employment magnitude of the labor force. To avoid issues related to simultaneity, I implement lagged relative productivity where $3 \leq b \leq 5$. Because the first or second year lag ($b = 1$ or $b = 2$) will not be enough to guarantee exogeneity, I start from the third year lag of the relative productivity. The current change in employment share in year t is less likely to be the key determinant of the relative productivity in year $t - b$ if $3 \leq b \leq 5$.

Along with the linear term of the degree of unionization, the interaction term between relative productivity and unionization is implemented in equation (2). Based on this specification, we can test whether the magnitude of growth-enhancing structural change in both countries can be explained by their degree of unionization. The marginal effect of relative productivity will determine the direction of structural change between growth-enhancing and growth-reducing. As the relative productivity appears in two terms, the partial derivative with the Delta Method standard error can test the null hypothesis of zero marginal effect. If the marginal effect of the relative productivity is positive ($\frac{\partial \Delta\theta_{ijt}}{\partial (p_{ijt}/P_{jt})} > 0$), $\beta_4 > 0$ means that the degree of unionization accelerated growth-enhancing structural change. On the other hand, when the marginal effect of the relative productivity is positive ($\frac{\partial \Delta\theta_{ijt}}{\partial (p_{ijt}/P_{jt})} > 0$), $\beta_4 < 0$ indicates that unionization decelerated the growth-enhancing structural change.²⁴ McMillan and Rodrik (2011) and Rodrik et al. (2017) classified country-specific stylized facts

²⁴Symmetrically, when $\frac{\partial \Delta\theta_{ijt}}{\partial (p_{ijt}/P_{jt})} < 0$, $\beta_4 < 0$ means that unionization accelerated the growth-reducing structural change. On the other hand, $\beta_4 > 0$ means that unionization decelerated the growth-reducing structural change when $\frac{\partial \Delta\theta_{ijt}}{\partial (p_{ijt}/P_{jt})} < 0$.

without considering their dynamic nature. They did not cover the possible heterogeneity which can be caused by variations in labor rigidity. I provide a more rigorous test for this with a disaggregated dynamic estimation using the empirical partial derivative in terms of p_{ijt}/P_{jt} . Furthermore, I identify whether the institutional variations can accelerate or delay growth-enhancing structural change. The partial derivative in terms of $Unionize_{ijt}$ will also be handled by the Delta Method so that I can see the overall role of unionization in the dynamics of employment share.

6 Estimation Results

This section provides empirical evidence on whether unionization can accelerate or decelerate productive labor re-allocation across different sectors within an economy. The estimations clarify how unionization can explain the heterogeneity in the magnitude of growth-enhancing structural change. As introduced in section 3, the gap in labor union density rate between the two countries does not reflect the actual gap in the organizational abilities between the two countries' labor unions. Therefore, putting two countries as a united sample might be misleading in interpreting role of the labor unions. I estimate the South Korean sample and Taiwanese sample separately so that I can avoid this problem. The following subsections sequentially cover South Korea and Taiwan to see whether they share any qualitative similarities or country-specific distinctive features.

6.1 South Korea

Table 4 includes the estimation results of equation (2) with the sample from South Korean data. The first three columns cover the whole sample, while the other three columns estimate the sample after the legalization of KCTU in 1999. Hence, the left-side columns of Table 4 consider from 1989 to 2019, and the right-side columns of Table 4 cover from 2000 to 2019. As KCTU's being recognized by the labor law brought about a qualitative change

in the labor union's role, sub-sample analysis can ensure whether the key coefficients vary across different regimes. Note that the beginning year of the sample period, 1989, is slightly after the democratization of South Korea (1987). My estimations will elaborate on whether unionization accelerates or decelerates productive labor re-allocation as a new democracy gets consolidated.

As clarified in section 5 on the econometric specifications, putting a single lag of the dependent variable satisfies the AR restrictions. As p-values of AR(1) and AR(2) tests reveal in the bottom rows in Table 4, Arellano and Bond's (1991) instrumental variables can be considered valid instrumental variables. Also, Hansen's over-identification test after the heteroskedasticity and autocorrelation robust estimation supports its validity in all six columns of Table 4. As is to be expected, the path dependence of the change in employment share, $\Delta\theta_{ijt}$, exists with considerable magnitude. The estimated coefficients of the lagged dependent variable are positive and statistically significant in all six columns. It means that a sector in a region was likely to attract more employment share in year t when it experienced an increase in employment share in year $t - 1$. This shows the importance of implementing dynamic nature in analyzing the structural change with panel data.

The first column of the Table 4 is using relative productivity in year $t - 3$, p_{ijt-3}/P_{jt-3} . The second and the third columns use p_{ijt-4}/P_{jt-4} and p_{ijt-5}/P_{jt-5} , respectively. The remaining three columns with sub-sample also deploy the same lagged variables of the relative productivity. Using lagged relative productivity variables, I can test the existence of growth-enhancing or growth-reducing structural change without endogeneity concerns. As relative productivity interacts with the index of the degree of unionization, the marginal effect of relative productivity is supposed to be different from its estimated coefficient of the linear term. Therefore, in the bottom part of Table 4, I suggest empirical marginal effect with the Delta Method standard error. The suggested empirical marginal effect is the average of marginal effect across every sample observation. Symmetrically, as the degree of unionization, $Unionize_{ijt}$ also has both linear and interaction terms, I also suggest the average of

empirical marginal effect with the standard error derived from the Delta Method.²⁵

The marginal effect of relative productivity is positive and statistically significant in all six columns in Table 4. This elaborates that we can observe the growth-enhancing structural change in South Korea during the sample period. In other words, a sector in a region with higher lagged relative productivity gained more employment share. Labor re-allocation occurred according to sectoral productivity in a growth-enhancing manner during the study period in South Korea. At the same time, the marginal effect of $Unionize_{ijt}$ does not reject the null hypothesis of being zero in all six columns in Table 4.

Even though the overall marginal effect of $Unionize_{ijt}$ is statistically not different from zero, $Unionize_{ijt}$ does suggest an important aspect in understanding the structural change. We can see that in all columns except column (4) of Table 4, the interaction term between $Unionize_{ijt}$ and lag of relative productivity has a negative coefficient with statistical significance. This means that, during the growth-enhancing structural change in South Korea, a sector in a region with a higher degree of unionization had a smaller growth-enhancing structural change. More productive sectors attracted more employment share within a region. At the same time, however, this productive re-allocation is decelerated when a sector has a higher degree of unionization. This is consistent with both theoretical and empirical predictions in the literature on labor rigidity caused by a labor union. As an increased degree of unionization will bring about decreased flexibility in pulling in new workers, the sectors have slower productive re-allocation than the optimal speed of adjustment.

Comparing the right-side columns (4), (5), and (6) of Table 4 with results coming from the earlier period (1989 - 1999) is also an important analysis that needs careful interpretation. In Appendix A, I add a table whose left-side three columns are coming from a sub-sample of 1989 - 1999 (Table A.1). The right-side three columns of the Table A.1 are identical to those in the Table 4. Key findings and implications of Table 4 are maintained in column (3)

²⁵Empirical marginal effect can be calculated at a specific value of covariate with standard error when we use the Delta Method. In all tables in this paper, the average of marginal effect and marginal effect evaluated at the sample mean provide almost identical results in terms of sign and significance.

of Table A.1. The marginal effect of relative productivity has a positive sign with statistical significance in column (3). In the first two columns, even though the null hypothesis of zero marginal effect is not rejected, the estimated marginal effects are still positive.

The estimated coefficient of the interaction term is significant only in column (3) of Table A.1 with the negative sign. Although the estimated signs of the interaction terms are negative in columns (1) and (2), they are not statistically significant. This means that from 1989 to 1999, the role of unionization was less explicit than after the legalization of KCTU in 1999. The growth-enhancing structural change had a heterogeneous magnitude according to unionization during 2000-2019, while this pattern was less explicit until 1999. Because the updated legal status of KCTU fundamentally improved the bargaining power of labor unions in South Korea, the role of labor unions in explaining the magnitude of growth-enhancing structural change became more explicit since 2000.

6.2 Taiwan

Symmetric to the previous subsection for South Korea, Table 5 covers the estimation with a whole sample of Taiwanese sector-region pairs and the estimation with a sub-sample divided according to the legalization of TCTU in 2000. The left-side columns of Table 5 study from 1992 to 2018, and the right-side columns of Table 5 study from 2001 to 2018. The starting year of my sample, 1992, is when Taiwan went through a democratic transition after the martial law period was finished. Therefore, like the previous subsection on South Korea, this subsection elaborates on the role of unionization in structural change during democratic consolidation. By estimating both sample periods, I guarantee the robustness of key findings on the role of labor unions in structural change.

The difference between Table 5 and Table 4 is the number of lagged dependent variables on the right-hand side and the consequent instrumental variables. Table 5 uses four lagged dependent variables as the explanatory variable. In estimating under the dynamic panel framework using Taiwanese data, implementing a smaller number of lagged dependent

variables cannot satisfy the AR restrictions. This is closely linked to the characteristics of Taiwanese data, which is clarified in previous sections for introducing data and econometric specifications. Even though all observations vary across every year t and every pair ij , each sector's geographical distribution is interpolated between census years (every five years). Therefore, utilizing the fifth-year and further lags guarantees fully exogenous instruments for lagged dependent variables. Correlation within interpolated years is controlled by adding four lagged dependent variables linearly on the right-hand side of the equation (2). The serial correlation tests using the first-differenced errors of equation (2) in the bottom panel of Table 5 support that the fifth-year lagged variable is a valid instrument. Hansen's over-identification test after heteroskedasticity and autocorrelation robust estimation also tells us that Arellano and Bond's (1991) approach to my Taiwanese data is the proper treatment in columns (2), (4), and (5). Compared to dynamic panel estimations using South Korean data, Table 5's over-identification test became more sensitive to the selection of lagged relative productivity (p_{ijt-b}/P_{jt-b}).

In each column of Table 5, every lagged dependent variable has negative and statistically significant estimated coefficients. It indicates that skipping the dynamic nature of labor re-allocation might be misleading in understanding the structural change in the Taiwanese economy. The overall marginal effect of relative productivity rejects the null hypothesis of being zero in columns (1), (2), and (4). In all three columns, the sign of the marginal effect was positive. This says that the structural change in the Taiwanese economy is also growth-enhancing. However, this is less statistically explicit as compared to the case of South Korea. In four columns from columns (1) to (4), we can see that the sample averages of empirical marginal effects coming from the Delta Method are negative and statistically significant. A sector in a Taiwanese region with higher unionization is expected to have a negative gain in employment share. At the same time, in addition to these salient marginal effects, the interaction term between relative productivity and unionization suggests that unionization can explain the heterogeneous magnitude of growth-enhancing structural change. In all columns

except column (1), estimated coefficients of interaction terms reject the null hypothesis of being zero with negative signs. This means that a sector in a region with higher unionization will have smaller growth-enhancing structural change. Increased rigidity in labor allocation leads an economy to have slower adjustments according to sectoral productivity.

The absolute values of the estimated coefficients of the interaction terms in the right-side columns of Table 5 are notable. Columns (4), (5), and (6) have bigger absolute values of interaction terms between relative productivity and unionization index compared to each counterpart in the left-side columns of Table 5.²⁶ The role of unionization becomes more explicit when we restrict the sample period to the period after the legalization of the autonomous confederation, TCTU. The increased bargaining power of labor unions caused Taiwan to have a heterogeneous size of growth-enhancing structural change across the degree of unionization. Whenever a sector is more unionized, the speed of growth-enhancing structural change is decelerated.

The earlier period before the legalization of TCTU, from 1992 to 2000, can also be compared to the right-side columns of Table 5. I add a table of this additional sub-sample analysis (Table A.2) to Appendix A as I did in the previous subsection of South Korea. The left-side columns of Table A.2) before the legalization of TCTU could not have more than one lagged dependent variable on the right-hand side due to the short sample period. Three columns on the right side in Table A.2 are the same as those in Table 5. The over-identification test results for the period before 2001 do not support the validity of GMM instruments. The estimated coefficients of the interaction terms between the unionization index and the relative productivity are negative in columns (1) and (2). However, they are not statistically significant. The explicit role of labor unions after TCTU's legalization in explaining the heterogeneous magnitude of growth-enhancing structural change is not found in the period before the legalization of TCTU.

²⁶When we restrict the focus on columns with proper diagnostic tests (columns (2), (4), and (5)), right-side columns of the table still have bigger absolute values in the estimated coefficients of the interaction terms.

7 Robustness Checks

This section provides some robustness checks in estimating equation (2). Even though Arellano and Bond's (1991) approach is regarded as one of the most widely used frameworks for dynamic panel data analysis, there have been many alternative estimators for the linear dynamic model. It includes the first-difference estimation of Anderson and Hsiao (1982) handling the Nickell's (1981) bias.²⁷ Suggested results in previous sections with Arellano and Bond's (1991) estimator are based on the one-step GMM estimation. The two-step GMM estimation can be derived by updating weight with the differenced residuals.²⁸ Along with Arellano and Bond's (1991) GMM estimator, system GMM estimators have been widely used so that researchers can attain robust results under different assumptions. Arellano and Bover (1995) and Blundell and Bond (1998) minimize the system of equations so that they can get more efficient estimators. These alternative dynamic panel data estimations provide qualitatively similar results compared to the section 6.

In Table 4, Hansen's over-identification test p-values are exactly equal to 1 in all columns. Also, in Table 5, four columns out of six columns have one as the p-values. Even though it supports the validity of instruments used in dynamic panel estimation, the concern of weak instrumental variables exists. Collapsing moment conditions can improve this in the estimations using South Korean data. P-values with collapsed moment conditions still do not reject the null hypothesis, and they are no longer equal to 1 when I estimate the South Korean sample. However, in estimations using Taiwanese data, collapsing still makes p-values that are exactly equal to 1.

A more serious concern in estimating equation (2) comes from the measurement errors in $Unionize_{ijt}$. $Unionize_{ijt}$ successfully measures the permeation of the labor union across

²⁷Both lagged level and lagged difference of endogenous variables have been implemented as exogenous instrumental variables under proper conditions such as serial correlation criteria. Arellano (1989) pointed out that the estimation using instruments in levels is recommended due to its non-singularities and smaller variances.

²⁸Even though the one-step and two-step estimators are asymptotically equivalent when the error follows the i.i.d. assumption, they provide different coefficients with different significance levels in practice.

different sectors and regions in the two nations. However, in the Taiwanese sample in particular, around 11 percent of the observations had $Unionize_{ijt} > 1$, and some of those values were extreme as elaborated in section 4. Even though we can still interpret those extreme values as being highly unionized, I suggest alternative measures for unionization, which are free from related issues caused by outlier observations.

7.1 Robustness of $Unionize_{ijt}$

$Unionize_{ijt}$ is exactly equal to the actual labor union density for each sector i in region j when the assumption of $(L_{jt}^u/L_t^u) = (L_{ijt}^u/L_{it}^u)$ holds. In other words, if this assumption holds, $Unionize_{ijt}$ should be between 0 and 1. It is true that the assumption of $(L_{jt}^u/L_t^u) = (L_{ijt}^u/L_{it}^u)$ is a strong premise because it considers uniform geographical distribution of union members across different sectors. Because government documents on labor unions that I digitized did not include the population list of labor unions which is required to construct the actual density (L_{ijt}^u/L_{ijt}) for each sector-region pair ij , my $Unionize_{ijt}$ may have measurement error in expressing the actual disaggregated density L_{ijt}^u/L_{ijt} . Even though constructing $Unionize_{ijt}$ as in the equation (1) is very successful in reflecting the within-nation heterogeneity in unionization, some extreme values are too large, especially in the Taiwanese sample. Around 11 percent of the observations in the Taiwanese sample have $Unionize_{ijt} > 1$, while this is the case in less than 1 percent of the observations in South Korea. Estimating equation (2) by excluding observations with $Unionize_{ijt} > 1$ does not lead to any qualitative changes in the South Korean sample, while the significance level is largely affected in the Taiwanese sample. This can be because eliminating observations with $Unionize_{ijt} > 1$ in the Taiwanese sample truncates more than 10 percent of the observations. Fewer variations across the remaining sample after truncation are not enough to identify the heterogeneous size of growth-enhancing structural change.

To handle possible concerns from the measurement errors of $Unionize_{ijt}$, I suggest alternative indices for the degree of unionization. Regardless of the specification of the index, the

key findings of this paper remain robust. The first alternative index is $Unionize_{ijt}^*$ below.

$$Unionize_{ijt}^* = \left\{ \frac{L_{jt}}{L_t} \times L_{it}^u \right\} / L_{ijt} \quad (3)$$

where all notations are consistent with those in the previous sections. The difference between $Unionize_{ijt}$ and $Unionize_{ijt}^*$ is that the employment share of region j ($\frac{L_{jt}}{L_t}$) is used in constructing $Unionize_{ijt}^*$ instead of the union members' share of region j ($\frac{L_{jt}^u}{L_t^u}$). $Unionize_{ijt}^*$ distributes sector-level industrial labor union members, L_{it}^u , according to the regional distribution of total employees while $Unionize_{ijt}$ distributes it according to the regional distribution of union members. Shifting $Unionize_{ijt}$ to $Unionize_{ijt}^*$ improves the tail distribution in the Taiwanese sample. Around 7 percent of the Taiwanese observations have $Unionize_{ijt}^* > 1$ while 11 percent of them had $Unionize_{ijt} > 1$. South Korean sample is almost not affected by shifting to $Unionize_{ijt}^*$ in terms of the tail distribution in the degree of unionization.

Table 6 replicates Table 4 by substituting $Unionize_{ijt}$ with $Unionize_{ijt}^*$. We can see that the main findings of Table 4 are maintained in Table 6. Growth-enhancing structural change is identified while its magnitude is heterogeneous across unionization. In a sector with more unionization, growth-enhancing structural change is decelerated. Table 7 also estimates the equation (2) by replacing $Unionize_{ijt}$ to $Unionize_{ijt}^*$ using the Taiwanese sample. Table 7 replicates Table 5. Hansen's over-identification tests are satisfied in all columns. AR test statistics are more supportive in the right-side columns of Table 7. The heterogeneous magnitude of growth-enhancing structural change is significantly explained by $Unionize_{ijt}^*$ in columns (2), (4), (5), and (6).

Both $Unionize_{ijt}$ and $Unionize_{ijt}^*$ may have some potential sources of measurement errors because they transform the sectoral distribution of union members (L_{it}^u) and regional distribution of union members (L_{jt}^u) to get an index for the degree of unionization which varies across each sector-region pair ij . If I use L_{it}^u and L_{jt}^u separately without transformation, those sources of measurement error can be avoided even though we no longer have

an index varying across ij . Still, by implementing L_{it}^u and L_{jt}^u together, the estimation can reflect variation across i and j .

$$\begin{aligned} \Delta\theta_{ijt} = & \beta_0 + \sum_{a=1}^d \beta_{1a} \Delta\theta_{ijt-a} + \beta_2 \frac{p_{ijt-b}}{P_{jt-b}} + \beta_3 \frac{L_{it}^u}{L_{it}} + \beta_4 \frac{L_{jt}^u}{L_{jt}} \\ & + \beta_5 \frac{p_{ijt-b}}{P_{jt-b}} \times \frac{L_{it}^u}{L_{it}} + \beta_6 \frac{p_{ijt-b}}{P_{jt-b}} \times \frac{L_{jt}^u}{L_{jt}} + \mu_{ij} + \lambda_t + \nu_{ijt} \end{aligned} \quad (4)$$

In equation (4) above, instead of implementing $Unionize_{ijt}$ in the equation (2), I use sectoral density ($\frac{L_{it}^u}{L_{it}}$) and regional density ($\frac{L_{jt}^u}{L_{jt}}$) linearly together along with the interaction terms. $\frac{L_{it}^u}{L_{it}}$ is between 0 and 1 in every observation for both countries. $\frac{L_{jt}^u}{L_{jt}}$ is also between 0 and 1 in both countries, except in the observations of Keelung city in Taiwan. Keelung city has $\frac{L_{jt}^u}{L_{jt}} > 1$ in nine years where its maximum is 1.17. Therefore, we can see that the concerns from extreme values are relieved when we estimate equation (4).

Using equation (4), I derive symmetric counterparts of Table 4 and 5. The consequent replication of Table 4 is Table 8. All diagnostic test statistics in Table 8, except the AR test in column (1), imply that the dynamic GMM estimation with instrumental variables suggested by Arellano and Bond (1991) can be properly implemented. The marginal effect of relative productivity identifies that South Korea went through a growth-enhancing structural change during the sample period. In Table 8, the degree of unionization is represented by two different measures, $\frac{L_{jt}^u}{L_{jt}}$ and $\frac{L_{it}^u}{L_{it}}$. The overall marginal effect of $\frac{L_{jt}^u}{L_{jt}}$ is not statistically significant while that of $\frac{L_{it}^u}{L_{it}}$ is positive and strongly significant. In line with Table 4, the magnitude of growth-enhancing structural change is heterogeneous across the degree of unionization. The interaction terms with $\frac{L_{jt}^u}{L_{jt}}$ do not reject the null hypotheses of having zero coefficients, while interaction terms with $\frac{L_{it}^u}{L_{it}}$ have negative and significant coefficients. This means that the heterogeneity of the magnitude of growth-enhancing structural change is mainly explained by sectoral unionization. However, regional unionization is unable to explain this. A sector with higher unionization had a slower growth-enhancing structural change in South Korea.

Estimating equation (4) using the Taiwanese sample replicates Table 5 with two different

unionization measures, $\frac{L_{jt}^u}{L_{jt}}$ and $\frac{L_{it}^u}{L_{it}}$. Table 9 includes the consequent estimation results. In the left-side columns of Table 9, which are for the whole sample period, AR 2 tests reject the null hypothesis with statistical significance, while all diagnostic tests are satisfied in the right-side columns. Growth-enhancing structural change is identified using the marginal effect of the lagged relative productivity in four columns among six columns in Table 9. The deceleration of structural change caused by the unionization is not observed when equation (4) is estimated with the whole Taiwanese sample. However, sub-sample analysis on equation (4) still finds the statistically significant role of unionization in Taiwan. The regional unionization ($\frac{L_{jt}^u}{L_{jt}}$) explains the heterogeneous size of growth-enhancing structural change in columns (4), (5), and (6). During the period after the legalization of TCTU,

I further try the arithmetic mean and geometric mean of $\frac{L_{it}^u}{L_{it}}$ and $\frac{L_{jt}^u}{L_{jt}}$ to substitute $Unionize_{ijt}$. The average of arithmetic mean and geometric mean is also used. In other words, $Unionize_{ijt}^{AM} = \left(\frac{L_{it}^u}{L_{it}} + \frac{L_{jt}^u}{L_{jt}} \right) / 2$ and $Unionize_{ijt}^{GM} = \sqrt{\frac{L_{it}^u}{L_{it}} \times \frac{L_{jt}^u}{L_{jt}}}$ can be considered as the arithmetic mean and geometric mean, respectively. $\{(Unionize_{ijt}^{AM} + Unionize_{ijt}^{GM})/2\}$ can take advantage of both arithmetic mean and geometric mean. All three types of alternative $Unionize_{ijt}$ yield qualitatively similar estimation results for South Korea and Taiwan. The statistical significance is maintained with robustness in South Korea, while it is weakened for Taiwan. However, the estimated signs and consequent implications are still robust in the estimations for both countries.

8 Discussion

The main findings of this paper suggest that the increased bargaining power of labor attained by democratic consolidation decelerated growth-enhancing structural change in both nations. Based on this finding, economists can think about the next question: If the increased bargaining power of labor is related to the magnitude of growth-enhancing structural change, did it also affect components of economic growth? This paper does not provide a compre-

hensive answer to this further question. However, I suggest one of the possible explanations based on my analysis of South Korea and Taiwan. Equation (5) is the growth decomposition suggested by McMillan and Rodrik (2011) and Rodrik et al. (2017).

$$\Delta P_t = \sum_i^I \theta_{i,t-1} \Delta p_{i,t} + \sum_i^I p_{i,t} \Delta \theta_{i,t} \quad (5)$$

where notations are consistent with earlier sections of this paper. McMillan and Rodrik (2011) and Rodrik et al. (2017) considered decomposition with a general year gap in measuring the sectoral change in employment share ($\theta_{i,t-k}$). This section focuses on the annual decomposition with $\theta_{i,t-1}$ so as to be able to link annual changes in employment share with annual variations in unionization. P_t and $p_{i,t}$ refer to economywide and sectoral labor productivity levels, respectively. The left-hand-side, ΔP_t , measures the overall labor productivity growth of an economy between two adjacent years t and $t - 1$. The total labor productivity growth of an economy can be decomposed into two terms. The first term on the right-hand-side ($\sum_i^I \theta_{i,t-1} \Delta p_{i,t}$) is called a within-sector component of labor productivity growth (within growth). The second term ($\sum_i^I p_{i,t} \Delta \theta_{i,t}$) is called the structural change component of labor productivity growth (structural growth). The within-sector component captures how much of the overall labor productivity growth can be attributed to changes within sectors. The structural change component quantifies how much overall labor productivity growth can be attributed to workers' movements across sectors.

Figure 1 describes the decomposition results for the South Korean economy from 1965 to 2018.²⁹ The bar stands for the share of within growth among total growth, while the line indicates that of structural growth. It is evident that structural growth dominated the within growth until the end of the 1980s. However, as the 1990s started, within growth dominated structural growth in most of the years. Figure 2 clarifies this more explicitly by considering the difference between the two shares. The vertical axis in Figure 2 is the

²⁹I am using the University of Groningen's 10-sector Database and Economic Transformation Database for this national-level decomposition.

difference between the share of within growth and the share of structural growth. Therefore, if the vertical axis has a positive value, it means that within growth dominated structural growth in that year. The three vertical lines in Figure 2 indicate reference years. They are democratization, the first power shift³⁰, and the second power shift³¹, respectively. Before democratization, the vertical axis had negative values for many years, while this hardly happened after democratization. Furthermore, after the second power shift, which is a critical event according to Huntington's (1991) consolidation test, within growth dominated the structural growth in all years. Figure 3 and Figure 4 are symmetric counterparts of Figure 1 and Figure 2 for the Taiwanese economy. The dominance of within growth was stable in Taiwan. However, Figure 3 suggests that, in recent years, the share of structural growth has become considerably smaller compared to earlier years before 2000.

Motivated by these patterns in labor productivity growth decomposition in South Korea and Taiwan, I can test whether the labor's increased bargaining power can explain this pattern of reduced share of structural growth. I did a growth decomposition of each region in South Korea and Taiwan using the sample that I used in previous sections. After implementing the region subscript j , the decomposition equation will be $\Delta P_{jt} = \sum_i \theta_{ij,t-1} \Delta p_{ij,t} + \sum_i p_{ij,t} \Delta \theta_{ij,t}$ for each sector-region pair ij . After decomposing the within-sector component and structural change component of each region, I see whether the lagged union density of each region j is statistically related to the size of the decomposed components of productivity growth. I elaborate on the estimation in Appendix B rigorously.

The lagged regional unionization is negatively correlated with the magnitude of structural change component in South Korea with statistical significance. On the other hand, the lagged regional unionization is positively correlated with the magnitude of the within-sector component in South Korea, and this relationship is also statistically significant. In the estimation with the Taiwanese sample, lagged regional union density cannot explain both the structural change component and the within-sector component. McMillan and Rodrik (2011)

³⁰1997 presidential election (power shift from the right-wing to the left-wing.).

³¹2007 presidential election (power shift from the left-wing to the right-wing.).

used the labor rigidity index from World Development Indicators of the World Bank to see its cross-country³² relationship with structural growth. They found a negative relationship between the labor rigidity index and structural growth term. My geographically decomposed sectoral analysis partially supports the findings of McMillan and Rodrik (2011). Results from South Korea are consistent with the aggregated pattern in McMillan and Rodrik (2011), while those from the Taiwanese sample are not.

The results in the previous paragraph give us some important points for future research. McMillan and Rodrik (2011) indicated that the structural change in South Korea and Singapore was not growth-enhancing during 1990 - 2005. However, at the same time, they found that very rapid ‘within’ productivity growth was significant enough to offset the negative role of structural change in economic growth. One of the potential mechanisms in South Korea can be considered in my growth decomposition analysis. An increase in unionization is related to a smaller magnitude of the structural growth during my sample period. On the other hand, the rise in unionization is related to a bigger magnitude of the within growth. As the sample period of McMillan and Rodrik’s (2011) analysis of South Korea (1990-2005) coincides with the period of labor unions’ growth, my estimation after the productivity growth decomposition in the previous paragraph supports conflicting directions of structural growth and within growth. This provides an insight that, in South Korea, the decelerated growth-enhancing structural change caused by unionization is transmitted to the smaller magnitude of structural growth.

These understandings can imply that the two countries adjusted their economic development differently to the evolution of labor institutions after democratization. South Korean economy reacted to the change in unionization by attaining more growth through the within-sector channel. Identifying Taiwan’s reaction requires further studies, given that there is no significance between unionization and each decomposed growth component in this section. Two nations share the labor union’s role in decelerating productive labor reallocation after

³²38 countries

democratization, which is strongly supported by my estimations of equation (2). Regarding the next question, whether unionization explains the decomposed growth pattern, however, the two countries do not share the same interpretation according to decomposition analysis in equation (5) and consequent estimations in Appendix B.

9 Conclusions

This paper finds that the magnitude of the growth-enhancing structural change in South Korea and Taiwan had heterogeneity across sectoral unionization. It analyzed disaggregated data on 7 sectors in 17 regions in South Korea and 10 sectors in 25 regions in Taiwan during their democratic regimes (since 1989 and 1992 for South Korea and Taiwan, respectively). In both countries, growth-enhancing structural change is observed throughout my sample period. The productive sector was able to attract a bigger employment share within a region. However, when a sector had higher unionization, the magnitude of growth-enhancing structural change decreased with statistical significance.

These findings from a detailed analysis of two East Asian new democracies, South Korea and Taiwan, are linked with stylized facts established by unionization literature in labor economics. As higher unionization is related to higher rigidity in labor input through multiple channels, labor rigidity can be the main mechanism between unionization and structural change. In other words, when labor's bargaining power increases, an economy no longer enjoys quick and immediate re-allocation of the labor input as per productivity. As both South Korea and Taiwan experienced a considerable increase in the bargaining power of labor after the democratization, the role of unionization was strong enough to be observed in the dynamic estimation.

Even though my study suggests a new interpretation of the economic development of new democracies, we have to be careful when considering democratization's overall impact. This study shows that the labor's increased bargaining power can delay the productive re-

allocation of labor. However, I am not quantifying other aspects of increased bargaining power of labor, such as increased welfare of workers, improved safety of workers, and the consequent impact on the wellness of the labor force. Given the fact that a labor employee is likely to be the median voter in these two countries, workers' increased wellness coming from a stronger union is a positive aspect that economists should consider. Also, my findings on growth-enhancing structural change do not predict the unionization's overall impact on economic growth level. These research agendas will require independent estimation with careful specification. My findings focus on the fact that institutional property represented by unionization should be regarded as a determinant of productive labor re-allocation and growth-enhancing structural change.

References

- [1] Abowd, J.M. and Kramarz, F., 1992. A test of negotiation and incentive compensation models using longitudinal French enterprise data. In J. van Ours, G. Pfann, and G. Ridder (Eds.), *Labour demand and equilibrium wage formation*. Amsterdam: Elsevier Science.
- [2] Acemoglu, D., Naidu, S., Restrepo, P. and Robinson, J.A., 2019. Democracy does cause growth. *Journal of political economy*, 127(1), pp.47-100.
- [3] Ahn, S.C. and Schmidt, P., 1997. Efficient estimation of dynamic panel data models: Alternative assumptions and simplified estimation. *Journal of econometrics*, 76(1-2), pp.309-321.
- [4] Ahsan, R.N. and Mitra, D., 2017. Can the whole actually be greater than the sum of its parts? Lessons from India's growing economy and its evolving structure. *Structural change, fundamentals, and growth: A framework and case studies*, pp.39-80. IFPRI
- [5] Alesina, A. and Rodrik, D., 1994. Distributive politics and economic growth. *The quarterly journal of economics*, 109(2), pp.465-490.
- [6] Amsden, A., 1989. *Asia's Next Giant: South. Korea and Late Industrialization*.
- [7] Anderson, T.W. and Hsiao, C., 1982. Formulation and estimation of dynamic models using panel data. *Journal of econometrics*, 18(1), pp.47-82.
- [8] Arellano, M. and Bond, S., 1991. Some tests of specification for panel data: Monte Carlo evidence and an application to employment equations. *The review of economic studies*, 58(2), pp.277-297.
- [9] Arellano, M. and Bover, O., 1995. Another look at the instrumental variable estimation of error-components models. *Journal of econometrics*, 68(1), pp.29-51.
- [10] Atta-Ankomah, R. and Osei, R.D., 2021. Structural Change and Welfare: A Micro Panel Data Evidence from Ghana. *The Journal of Development Studies*, 57(11), pp.1927-1944.
- [11] Barro, R.J., 1996. Democracy and growth. *Journal of economic growth*, 1(1), pp.1-27.
- [12] Barro, R.J., 1997. Determinants of economic growth.
- [13] Blanchflower, D. and Bryson, A., 2003. Changes Over Time in Union Relative Wage Effects in the UK and the USA Revisited. In J. Addison and C. Schnabel (Eds.), *International handbook of trade unions*. Cheltenham: Edward Elgar.
- [14] Blanchflower, D.G. and Freeman, R.B., 1992. Unionism in the United States and other advanced OECD countries. *Industrial Relations: A Journal of Economy and Society*, 31(1), pp.56-79.
- [15] Blau, F.D. and Kahn, L.M., 1996. International differences in male wage inequality: institutions versus market forces. *Journal of Political Economy*, 104(4), pp.791-837.

- [16] Blau, F.D. and Kahn, L.M., 1999. Institutions and laws in the labor market. In *Handbook of Labor Economics* (Vol. 3, pp. 1399-1461). Elsevier.
- [17] Blundell, R. and Bond, S., 1998. Initial conditions and moment restrictions in dynamic panel data models. *Journal of Econometrics*, 87(1), pp.115-143.
- [18] Boal, W.M. and Pencavel, J., 1994. The effects of labor unions on employment, wages, and days of operation: coal mining in West Virginia. *The Quarterly Journal of Economics*, 109(1), pp.267-298.
- [19] Booth, A.L., 1995a. Layoffs with payoffs: A bargaining model of union wage and severance pay determination. *Economica*, pp.551-564.
- [20] Booth, A.L., 1995. *The economics of the trade union*. Cambridge University Press.
- [21] Brown, J.N. and Ashenfelter, O., 1986. Testing the efficiency of employment contracts. *Journal of Political Economy*, 94(3, Part 2), pp.S40-S87.
- [22] Cahuc, P., Carcillo, S. and Zylberberg, A., 2014. *Labor economics*. MIT press.
- [23] Card, D., 1986. Efficient contracts with costly adjustment: short-run employment determination for airline mechanics. *The American Economic Review*, pp.1045-1071.
- [24] Card, D., 1988. Unexpected inflation, real wages, and employment determination in union contracts.
- [25] Card, D., 1996. The effect of unions on the structure of wages: A longitudinal analysis. *Econometrica: Journal of the Econometric Society*, pp.957-979.
- [26] De Vries, Gaaitzen, Linda Arfelt, Dorothea Drees, Mareike Godemann, Calumn Hamilton, Bente Jessen-Thiesen, Ahmet Ihsan Kaya, Hagen Kruse, Emmanuel Mensah and Pieter Woltjer, 2021. *The Economic Transformation Database (ETD): Content, Sources, and Methods*. WIDER Technical Note 2/2021.' DOI: 10.35188/UNU-WIDER/WTN/2021-2
- [27] De Vries, G., Timmer, M. and De Vries, K., 2015. Structural transformation in Africa: Static gains, dynamic losses. *The Journal of Development Studies*, 51(6), pp.674-688.
- [28] Dell'Aringa, C. and Lucifora, C., 1994. Wage dispersion and unionism: do unions protect low pay?. *International Journal of Manpower*.
- [29] Diao, X., McMillan, M. and Rodrik, D., (2019). "The recent growth boom in developing economies: A structural-change perspective". *Palgrave handbook of development economics*, pp. 281-334.
- [30] DiNardo, J. and Lee, D.S., 2004. Economic impacts of new unionization on private sector employers: 1984–2001. *The Quarterly Journal of Economics*, 119(4), pp.1383-1441.

- [31] Feenstra, R.C., Madani, D., Yang, T.H. and Liang, C.Y., 1999. Testing endogenous growth in South Korea and Taiwan. *Journal of development economics*, 60(2), pp.317-341.
- [32] Firpo, S. and Pieri, R., 2017. Structural changes and wage inequality: The Brazilian case. *Structural change, fundamentals, and growth: A framework and case studies*, pp. 267-292. IFPRI
- [33] Frandsen, B.R., 2012. Why unions still matter: The effects of unionization on the distribution of employee earnings. Manuscript. Cambridge, MA: MIT.
- [34] Freeman, R.B. and Medoff, J.L., 1984. What do unions do. *Indus. and Lab. Rel. Rev.*, 38, p.244.
- [35] Haggard, S., 1990. *Pathways from the periphery: The politics of growth in the newly industrializing countries*. Cornell University Press.
- [36] Hansen, L.P., 1982. Large sample properties of generalized method of moments estimators. *Econometrica: Journal of the econometric society*, pp.1029-1054.
- [37] Hirsch, B.T., 2004. Reconsidering union wage effects: Surveying new evidence on an old topic. *Journal of Labor Research*, 25(2), pp.233-266.
- [38] Huang, C.L., 2002. The politics of reregulation: globalization, democratization, and the Taiwanese labor movement. *The Developing Economies*, 40(3), pp.305-326.
- [39] Huntington, S.P., 1991. Democracy's third wave. *Journal of democracy*, 2(2), pp.12-34.
- [40] Johnson, C., 1982. *MITI and the Japanese miracle: the growth of industrial policy, 1925-1975*. Stanford University Press.
- [41] Kahn, L.M., 1998. Collective bargaining and the interindustry wage structure: international evidence. *Economica*, 65(260), pp.507-534.
- [42] Kahn, L.M., 2000. Wage inequality, collective bargaining, and relative employment from 1985 to 1994: Evidence from fifteen OECD countries. *Review of Economics and Statistics*, 82(4), pp.564-579.
- [43] Lemieux, T., 1998. Estimating the effects of unions on wage inequality in a panel data model with comparative advantage and nonrandom selection. *Journal of Labor Economics*, 16(2), pp.261-291.
- [44] Lewis, H.G., 1963. *Unionism and relative wages in the United States: an empirical inquiry*. Chicago: University of Chicago Press.
- [45] Lewis, H.G., 1986. Union relative wage effects. *Handbook of labor economics*, 2, pp.1139-1181.
- [46] Lindbeck, A. and Snower, D.J., 1988. Cooperation, harassment, and involuntary unemployment: an insider-outsider approach. *The American Economic Review*, pp.167-188.

- [47] Lindbeck, A. and Snower, D.J., 2001. Insiders versus outsiders. *Journal of Economic Perspectives*, 15(1), pp.165-188.
- [48] Lipset S.M., 1960. *Political man : the social bases of politics*, Garden City, N.Y.:Doubleday
- [49] Lucas Jr, R.E., 1988. On the mechanics of economic development. *Journal of Monetary Economics*, 22(1), pp.3-42.
- [50] Lucas Jr, R.E., 1993. Making a miracle. *Econometrica: Journal of the Econometric Society*, pp.251-272.
- [51] Martinez-Bravo, M. and Wantchekon, L., (2021). “Political economy and structural transformation: democracy, regulation and public investment”. Working Paper.
- [52] McDonald, I.M. and Solow, R.M., 1981. Wage bargaining and employment. *The American Economic Review*, 71(5), pp.896-908.
- [53] McCaig, B. and Pavcnik, N., 2017. Moving out of agriculture: structural change in Vietnam. *Structural change, fundamentals, and growth: A framework and case studies*, pp. 81-124. IFPRI
- [54] McMillan, M. and Rodrik, D., 2011. Globalization, structural change and productivity growth, *Making Globalization Socially Sustainable*, p.49-84. WTO and ILO
- [55] McMillan, M., Rodrik, D. and Verduzco-Gallo, Í.I., 2014. Globalization, Structural Change, and Productivity Growth, with an Update on Africa. *World Development*, 63, pp.11-32.
- [56] Mueller, V., Masias, I. and Vallury, S., 2019. Labor-saving technologies and structural transformation in northern Ghana. *Agricultural Economics*, 50(5), pp.581-594.
- [57] Nickell, S., 1981. Biases in dynamic models with fixed effects. *Econometrica: Journal of the econometric society*, pp.1417-1426.
- [58] Nickell, S.J. and Andrews, M., 1983. Unions, real wages and employment in Britain 1951-79. *Oxford economic papers*, 35, pp.183-206.
- [59] Nickell, S. and Wadhvani, S., 1990. Insider forces and wage determination. *The Economic Journal*, 100(401), pp.496-509.
- [60] Papaioannou, E. and Siourounis, G., 2008. Democratisation and growth. *The Economic Journal*, 118(532), pp.1520-1551.
- [61] Persson, T. and Tabellini, G., 2007. The growth effect of democracy: is it heterogenous and how can it be estimated?.
- [62] Przeworski, A., 1991. *Democracy and the market: Political and economic reforms in Eastern Europe and Latin America*. Cambridge university press.

- [63] Przeworski, A. and Limongi, F., 1997. Modernization: Theories and facts. *World politics*, 49(2), pp.155-183.
- [64] Persson, T. and Tabellini, G., 2007. The growth effect of democracy: is it heterogenous and how can it be estimated?.
- [65] Rodrik, D., McMillan, M., and Sepulveda, C., 2017. Structural change, fundamentals and growth: A framework and case studies , pp.1-38. IFPRI
- [66] Rowthorn, R.E., 1992. Centralisation, employment and wage dispersion. *The Economic Journal*, 102(412), pp.506-523.
- [67] Slater, D. and Wong, J., 2013. The strength to concede: Ruling parties and democratization in developmental Asia. *Perspectives on Politics*, 11(3), pp.717-733.
- [68] Sojourner, A.J., Town, R.J., Grabowski, D.C. and Chen, M.M., 2012. Impacts of unionization on employment, product quality and productivity: Regression discontinuity evidence from nursing homes (No. w17733). National Bureau of Economic Research.
- [69] Tavares, J. and Wacziarg, R., 2001. How democracy affects growth. *European economic review*, 45(8), pp.1341-1378.
- [70] Wade, R., 2018. *Governing the market*. Princeton University Press.
- [71] Woo, J.E. and Woo-Cumings, M., 1991. *Race to the swift: State and finance in Korean industrialization*. Columbia University Press.
- [72] Yap, O.F., 2012. A strategic model of economic performance and democratization in South Korea and Taiwan. *British Journal of Political Science*, 42(1), pp.213-239.

Tables

Table 1: 10-Sector classification

Sectors	Sector Name	ISIC Rev. 3.1 Code	ISIC Rev. 3.1 Description
AGR	Agriculture	AtB	Agriculture, Hunting and Forestry, Fishing
MIN	Mining	C	Mining and Quarrying
MAN	Manufacturing	D	Manufacturing
WRT	Trade services	G+H	Wholesale and Retail trade; repair of motor vehicles, motorcycles and personal and household goods, Hotels and Restaurants
CON	Construction	F	Construction
PU	Utilities	E	Electricity, Gas, and Water Supply
TRA	Transport services	I	Transport, Storage and Communications
FIRE	Business services	J+K	Financial Intermediation, Renting and Business Activities (excluding owner occupied rents)
PUB	Government services	L, M, N	Public Administration and Defense, Education, Health and Social work
OTH	Personal services	O, P	Other Community, Social and Personal service activities, Activities of Private Households

Table 2: Sectors in South Korea and Taiwan

Sectors	Korea 1989 - 2019	Taiwan 1992 - 2003	Taiwan 2004 - 2012
AGR	AGR	AGR	AGR
MIN	MIN	MIN	MIN
MAN	MAN	MAN	MAN
WRT	WRT	WRT	WRT
CON	CON	CON	CON
PU	PTF	PU	PU
TRA		TRA	TRA
FIRE		FIRE	FIRE
PUB	PUBO	PUBO	PUB
OTH			OTH

Table 3: Descriptive statistics

Variable	Mean	Std. Dev.	Min.	Max.	N
South Korea					
θ_{ijt}	0.158	0.105	0	0.479	2640
$\Delta\theta_{ijt}$	3.44e-06	0.01	-0.047	0.055	2640
p_{ijt}/P_{jt}	1.233	1.167	0.042	11.636	2640
$unionize_{ijt}$	0.079	0.16	0	2.411	2640
Taiwan					
θ_{ijt}	0.109	0.11	0	0.551	2865
$\Delta\theta_{ijt}$	-0.0002014	0.009	-0.086	0.103	2865
p_{ijt}/P_{jt}	1.049	1.001	-1.53	18.952	2865
$unionize_{ijt}$	0.444	1.129	0.001	19.915	2865

Table 4: South Korea's 7 sectors in 17 regions (Arellano-Bond estimator using unbalanced panel; Whole sample and sub-sample analyses based on KCTU's legalization in 1999)

	(1)	(2)	(3)	(4)	(5)	(6)
	$\Delta\theta_{ijt}$	$\Delta\theta_{ijt}$	$\Delta\theta_{ijt}$	$\Delta\theta_{ijt}$	$\Delta\theta_{ijt}$	$\Delta\theta_{ijt}$
	1989 - 2019			2000 - 2019		
$\Delta\theta_{ijt-1}$	0.112*** (0.0237)	0.121*** (0.0253)	0.121*** (0.0276)	0.0798** (0.0324)	0.0809** (0.0323)	0.0838** (0.0330)
p_{ijt-3}/P_{jt-3}	0.00236*** (0.000747)			0.00198*** (0.000686)		
p_{ijt-4}/P_{jt-4}		0.00166*** (0.000521)			0.00157*** (0.000529)	
p_{ijt-5}/P_{jt-5}			0.00130*** (0.000410)			0.00103*** (0.000378)
$Unionize_{ijt}$	0.00229 (0.00159)	0.00348* (0.00196)	0.00239 (0.00159)	0.00292 (0.00274)	0.00269 (0.00220)	0.00150 (0.00151)
$(p_{ijt-3}/P_{jt-3}) \times Unionize_{ijt}$	-0.00233*** (0.000813)			-0.00254 (0.00205)		
$(p_{ijt-4}/P_{jt-4}) \times Unionize_{ijt}$		-0.00214** (0.000874)			-0.00225* (0.00125)	
$(p_{ijt-5}/P_{jt-5}) \times Unionize_{ijt}$			-0.00134*** (0.000480)			-0.000987** (0.000398)
Observations	2640	2528	2416	1958	1948	1935
Fixed Effects	Yes	Yes	Yes	Yes	Yes	Yes
M.E. of p/P (Delta Method)	0.00217*** (0.00069)	0.00149*** (0.00047)	0.00119*** (0.00038)	0.00181*** (0.00065)	0.00142*** (0.00048)	0.00096*** (0.00035)
M.E. of $Unionize_{ijt}$ (Delta Method)	-0.00057 (0.00125)	0.00083 (0.00143)	0.00072 (0.00121)	-0.00011 (0.00157)	-0.00005 (0.00148)	0.00028 (0.00126)
AR(1) p-value	0.000	0.000	0.000	0.000	0.000	0.000
AR(2) p-value	0.189	0.646	0.913	0.651	0.733	0.790
Hansen's oid p-value	1.000	1.000	1.000	1.000	1.000	1.000

Standard errors in parentheses

* $p < 0.10$, ** $p < 0.05$, *** $p < 0.01$

M.E. stands for marginal effect. Standard errors are calculated using the Delta Method.

Table 5: Taiwan's 10 sectors in 25 regions (Arellano-Bond estimator using unbalanced panel; Whole sample and sub-sample analyses based on TCTU's legalization in 2000)

	(1)	(2)	(3)	(4)	(5)	(6)
	$\Delta\theta_{ijt}$	$\Delta\theta_{ijt}$	$\Delta\theta_{ijt}$	$\Delta\theta_{ijt}$	$\Delta\theta_{ijt}$	$\Delta\theta_{ijt}$
	1992 - 2018			2001 - 2018		
$\Delta\theta_{ijt-1}$	-0.144*** (0.0183)	-0.141*** (0.0176)	-0.161*** (0.0203)	-0.0903*** (0.0157)	-0.0909*** (0.0155)	-0.101*** (0.0170)
$\Delta\theta_{ijt-2}$	-0.170*** (0.0277)	-0.162*** (0.0273)	-0.176*** (0.0301)	-0.101*** (0.0119)	-0.101*** (0.0120)	-0.110*** (0.0139)
$\Delta\theta_{ijt-3}$	-0.119*** (0.0150)	-0.116*** (0.0156)	-0.124*** (0.0173)	-0.0679*** (0.0139)	-0.0680*** (0.0146)	-0.0755*** (0.0152)
$\Delta\theta_{ijt-4}$	-0.0176** (0.00755)	-0.0171** (0.00735)	-0.0806*** (0.0179)	-0.0138** (0.00582)	-0.0137** (0.00583)	-0.0597*** (0.0166)
p_{ijt-3}/P_{jt-3}	0.000290* (0.000151)			0.000396*** (0.000134)		
p_{ijt-4}/P_{jt-4}		0.000472** (0.000190)			0.000433*** (0.000152)	
p_{ijt-5}/P_{jt-5}			0.000340 (0.000211)			0.000404** (0.000197)
$Unionize_{ijt}$	-0.000625** (0.000292)	-0.000515** (0.000246)	-0.000694** (0.000328)	-0.000199 (0.000128)	-0.000194* (0.000107)	-0.000272** (0.000131)
$(p_{ijt-3}/P_{jt-3}) \times Unionize_{ijt}$	-0.0000318 (0.000160)			-0.000160** (0.0000656)		
$(p_{ijt-4}/P_{jt-4}) \times Unionize_{ijt}$		-0.000188** (0.0000901)			-0.000207*** (0.0000555)	
$(p_{ijt-5}/P_{jt-5}) \times Unionize_{ijt}$			-0.000235* (0.000128)			-0.000253*** (0.0000941)
Observations	2939	2924	2913	2548	2533	2522
Fixed Effects	Yes	Yes	Yes	Yes	Yes	Yes
M.E. of p/P (Delta Method)	0.00027** (0.00013)	0.00039** (0.00017)	0.00024 (0.00018)	0.00032** (0.00012)	0.00034 (0.00310)	0.00030 (0.01028)
M.E. of $Unionize_{ijt}$ (Delta Method)	-0.00066*** (0.00022)	-0.00072*** (0.00021)	-0.00096*** (0.00023)	-0.00037*** (0.00011)	-0.00042 (0.00201)	-0.00055 (0.00790)
AR(1) p-value	0.000	0.000	0.000	0.000	0.000	0.000
AR(2) p-value	0.129	0.231	0.248	0.357	0.387	0.248
AR(5) p-value	0.528	0.523	0.287	0.577	0.579	0.672
Hansen's oid p-value	0.000	1.000	0.000	1.000	1.000	0.000

Standard errors in parentheses

* $p < 0.10$, ** $p < 0.05$, *** $p < 0.01$

M.E. stands for marginal effect. Standard errors are calculated using the Delta Method.

Table 6: South Korea's 7 sectors in 17 regions (Arellano-Bond estimator using unbalanced panel with $Unionize_{ijt}^*$; Whole sample and sub-sample analyses based on KCTU's legalization in 1999)

	(1)	(2)	(3)	(4)	(5)	(6)
	$\Delta\theta_{ijt}$	$\Delta\theta_{ijt}$	$\Delta\theta_{ijt}$	$\Delta\theta_{ijt}$	$\Delta\theta_{ijt}$	$\Delta\theta_{ijt}$
	1989 - 2019			2000 - 2019		
$\Delta\theta_{ijt-1}$	0.107*** (0.0240)	0.118*** (0.0258)	0.120*** (0.0277)	0.0708** (0.0324)	0.0762** (0.0326)	0.0821** (0.0331)
p_{ijt-3}/P_{jt-3}	0.00275*** (0.000836)			0.00321*** (0.00118)		
p_{ijt-4}/P_{jt-4}		0.00177*** (0.000561)			0.00215*** (0.000784)	
p_{ijt-5}/P_{jt-5}			0.00116*** (0.000399)			0.00111** (0.000433)
$Unionize_{ijt}^*$	0.000874 (0.00233)	0.00309 (0.00241)	0.000554 (0.00187)	0.00819* (0.00475)	0.00521 (0.00333)	-0.000837 (0.00274)
$(p_{ijt-3}/P_{jt-3}) \times Unionize_{ijt}^*$	-0.00255** (0.00101)			-0.00839** (0.00332)		
$(p_{ijt-4}/P_{jt-4}) \times Unionize_{ijt}^*$		-0.00244** (0.00105)			-0.00487** (0.00221)	
$(p_{ijt-5}/P_{jt-5}) \times Unionize_{ijt}^*$			-0.00118** (0.000518)			-0.00119* (0.000715)
Observations	2640	2528	2416	1958	1948	1935
Fixed Effects	Yes	Yes	Yes	Yes	Yes	Yes
M.E. of p/P (Delta Method)	0.00250*** (0.00074)	0.00153*** (0.00047)	0.00104*** (0.00035)	0.00248*** (0.00091)	0.00172*** (0.00061)	0.00100*** (0.00038)
M.E. of $Unionize_{ijt}^*$ (Delta Method)	-0.00226 (0.00266)	0.00006 (0.00248)	-0.00090 (0.00190)	-0.00187 (0.00344)	-0.00073 (0.00297)	-0.00230 (0.00251)
AR(1) p-value	0.000	0.000	0.000	0.000	0.000	0.000
AR(2) p-value	0.150	0.624	0.915	0.543	0.677	0.779
Hansen's oid p-value	1.000	1.000	1.000	1.000	1.000	1.000

Standard errors in parentheses

* $p < 0.10$, ** $p < 0.05$, *** $p < 0.01$

M.E. stands for marginal effect. Standard errors are calculated using the Delta Method.

Table 7: Taiwan's 10 sectors in 25 regions (Arellano-Bond estimator using unbalanced panel with $Unionize_{ijt}^*$; Whole sample and sub-sample analyses based on TCTU's legalization in 2000)

	(1)	(2)	(3)	(4)	(5)	(6)
	$\Delta\theta_{ijt}$	$\Delta\theta_{ijt}$	$\Delta\theta_{ijt}$	$\Delta\theta_{ijt}$	$\Delta\theta_{ijt}$	$\Delta\theta_{ijt}$
	1992 - 2018			2001 - 2018		
$\Delta\theta_{ijt-1}$	-0.0844*** (0.0156)	-0.0720*** (0.0156)	-0.0836*** (0.0173)	-0.0363*** (0.0140)	-0.0341** (0.0141)	-0.0408*** (0.0152)
$\Delta\theta_{ijt-2}$	-0.130*** (0.0238)	-0.116*** (0.0235)	-0.124*** (0.0252)	-0.0668*** (0.0114)	-0.0651*** (0.0116)	-0.0726*** (0.0122)
$\Delta\theta_{ijt-3}$	-0.0935*** (0.0126)	-0.0854*** (0.0131)	-0.0815*** (0.0143)	-0.0397*** (0.0115)	-0.0386*** (0.0118)	-0.0412*** (0.0124)
$\Delta\theta_{ijt-4}$	-0.0157** (0.00650)	-0.0156** (0.00650)	-0.0544*** (0.0152)	-0.0121** (0.00502)	-0.0121** (0.00503)	-0.0414*** (0.0143)
p_{ijt-3}/P_{jt-3}	0.000324** (0.000158)			0.000332** (0.000137)		
p_{ijt-4}/P_{jt-4}		0.000399** (0.000184)			0.000269** (0.000108)	
p_{ijt-5}/P_{jt-5}			0.000182 (0.000141)			0.000164* (0.0000928)
$Unionize_{ijt}^*$	-0.000796** (0.000359)	-0.000714** (0.000310)	-0.00114*** (0.000353)	-0.000152 (0.000190)	-0.000240 (0.000178)	-0.000430* (0.000221)
$(p_{ijt-3}/P_{jt-3}) \times Unionize_{ijt}^*$	-0.000125 (0.000154)			-0.000303*** (0.0000857)		
$(p_{ijt-4}/P_{jt-4}) \times Unionize_{ijt}^*$		-0.000318* (0.000174)			-0.000323*** (0.0000896)	
$(p_{ijt-5}/P_{jt-5}) \times Unionize_{ijt}^*$			-0.000185 (0.000184)			-0.000296*** (0.000109)
Observations	3842	3827	3816	3254	3239	3228
Fixed Effects	Yes	Yes	Yes	Yes	Yes	Yes
M.E. of p/P (Delta Method)	0.00029** (0.00014)	0.00031* (0.00016)	0.00013 (0.00011)	0.00025** (0.00012)	0.00018* (0.00009)	0.00008 (0.00007)
M.E. of $Unionize_{ijt}^*$ (Delta Method)	-0.00094*** (0.00030)	-0.00109*** (0.00028)	-0.00135*** (0.00033)	-0.00049*** (0.00016)	-0.00061*** (0.00017)	-0.00077*** (0.00022)
AR(1) p-value	0.000	0.000	0.000	0.000	0.000	0.000
AR(2) p-value	0.189	0.289	0.150	0.299	0.300	0.083
AR(5) p-value	0.083	0.082	0.040	0.873	0.874	0.967
Hansen's oid p-value	1.000	1.000	1.000	1.000	1.000	1.000

Standard errors in parentheses

* $p < 0.10$, ** $p < 0.05$, *** $p < 0.01$

M.E. stands for marginal effect. Standard errors are calculated using the Delta Method.

Table 8: South Korea's 7 sectors in 17 regions (Arellano-Bond estimator using unbalanced panel with $\frac{L_{it}^u}{L_{it}}$ and $\frac{L_{jt}^u}{L_{jt}}$; Whole sample and sub-sample analyses based on KCTU's legalization in 1999)

	(1)	(2)	(3)	(4)	(5)	(6)
	$\Delta\theta_{ijt}$	$\Delta\theta_{ijt}$	$\Delta\theta_{ijt}$	$\Delta\theta_{ijt}$	$\Delta\theta_{ijt}$	$\Delta\theta_{ijt}$
	1989 - 2019			2000 - 2019		
$\Delta\theta_{ijt-1}$	0.0378 (0.0267)	0.0702** (0.0285)	0.0779*** (0.0302)	0.0567* (0.0318)	0.0647** (0.0317)	0.0696** (0.0320)
p_{ijt-3}/P_{jt-3}	0.00506*** (0.00122)			0.00524*** (0.00110)		
p_{ijt-4}/P_{jt-4}		0.00398*** (0.000934)			0.00351*** (0.000985)	
p_{ijt-5}/P_{jt-5}			0.00317*** (0.000852)			0.00277*** (0.000840)
$\frac{L_{jt}^u}{L_{jt}}$	0.000678 (0.0111)	0.000910 (0.0108)	-0.00245 (0.0104)	-0.00460 (0.0112)	-0.00685 (0.0108)	-0.00857 (0.0104)
$\frac{L_{it}^u}{L_{it}}$	0.0349*** (0.00957)	0.0367*** (0.00871)	0.0366*** (0.00944)	0.0479*** (0.0107)	0.0367*** (0.0102)	0.0337*** (0.0104)
$(p_{ijt-3}/P_{jt-3}) \times \frac{L_{jt}^u}{L_{jt}}$	0.00318 (0.00648)			0.00558 (0.00667)		
$(p_{ijt-3}/P_{jt-3}) \times \frac{L_{it}^u}{L_{it}}$	-0.0130*** (0.00322)			-0.0158*** (0.00317)		
$(p_{ijt-4}/P_{jt-4}) \times \frac{L_{jt}^u}{L_{jt}}$		0.00161 (0.00596)			0.00603 (0.00572)	
$(p_{ijt-4}/P_{jt-4}) \times \frac{L_{it}^u}{L_{it}}$		-0.0111*** (0.00266)			-0.0105*** (0.00291)	
$(p_{ijt-5}/P_{jt-5}) \times \frac{L_{jt}^u}{L_{jt}}$			0.00374 (0.00522)			0.00690 (0.00504)
$(p_{ijt-5}/P_{jt-5}) \times \frac{L_{it}^u}{L_{it}}$			-0.00965*** (0.00252)			-0.00891*** (0.00262)
Observations	2406	2299	2192	2010	2004	1996
Fixed Effects	Yes	Yes	Yes	Yes	Yes	Yes
M.E. of p/P (Delta Method)	0.00410*** (0.00093)	0.00312*** (0.00068)	0.00254*** (0.00062)	0.00426*** (0.00087)	0.00296*** (0.00073)	0.00238*** (0.00064)
M.E. of $\frac{L_{jt}^u}{L_{jt}}$ (Delta Method)	0.00461 (0.00745)	0.00292 (0.00732)	0.00225 (0.00725)	0.00223 (0.00705)	0.00061 (0.00701)	0.00007 (0.00708)
M.E. of $\frac{L_{it}^u}{L_{it}}$ (Delta Method)	0.01882*** (0.00692)	0.02282*** (0.00649)	0.02442*** (0.00719)	0.02853*** (0.00762)	0.02372*** (0.00738)	0.02249*** (0.00790)
AR(1) p-value	0.000	0.000	0.000	0.000	0.000	0.000
AR(2) p-value	0.024	0.380	0.463	0.318	0.557	0.644
Hansen's oid p-value	1.000	1.000	1.000	1.000	1.000	1.000

Standard errors in parentheses

* $p < 0.10$, ** $p < 0.05$, *** $p < 0.01$

M.E. stands for marginal effect. Standard errors are calculated using the Delta Method.

Table 9: Taiwan's 10 sectors in 25 regions (Arellano-Bond estimator using unbalanced panel with $\frac{L_{it}^u}{L_{it}}$ and $\frac{L_{jt}^u}{L_{jt}}$; Whole sample and sub-sample analyses based on TCTU's legalization in 2000)

	(1)	(2)	(3)	(4)	(5)	(6)
	$\Delta\theta_{ijt}$	$\Delta\theta_{ijt}$	$\Delta\theta_{ijt}$	$\Delta\theta_{ijt}$	$\Delta\theta_{ijt}$	$\Delta\theta_{ijt}$
	1992 - 2018			2001 - 2018		
$\Delta\theta_{ijt-1}$	-0.135*** (0.0193)	-0.134*** (0.0190)	-0.145*** (0.0199)	-0.0864*** (0.0171)	-0.0866*** (0.0171)	-0.0936*** (0.0184)
$\Delta\theta_{ijt-2}$	-0.163*** (0.0261)	-0.164*** (0.0257)	-0.176*** (0.0281)	-0.0951*** (0.0129)	-0.0957*** (0.0131)	-0.105*** (0.0149)
$\Delta\theta_{ijt-3}$	-0.109*** (0.0152)	-0.116*** (0.0153)	-0.123*** (0.0167)	-0.0673*** (0.0124)	-0.0727*** (0.0137)	-0.0800*** (0.0148)
$\Delta\theta_{ijt-4}$	-0.0182** (0.00787)	-0.0180** (0.00776)	-0.0880*** (0.0156)	-0.0148** (0.00626)	-0.0149** (0.00631)	-0.0700*** (0.0132)
p_{ijt-3}/P_{jt-3}	0.00119* (0.000652)			0.00144** (0.000625)		
p_{ijt-4}/P_{jt-4}		0.00131* (0.000703)			0.00128** (0.000574)	
p_{ijt-5}/P_{jt-5}			0.000628 (0.000585)			0.000734 (0.000479)
$\frac{L_{jt}^u}{L_{jt}}$	-0.00250 (0.00736)	-0.00358 (0.00766)	-0.00328 (0.00830)	0.00266 (0.00490)	0.00250 (0.00503)	0.00248 (0.00554)
$\frac{L_{it}^u}{L_{it}}$	-0.00162 (0.00172)	0.0000882 (0.00204)	-0.00343 (0.00240)	-0.00342** (0.00146)	-0.00254 (0.00156)	-0.00496*** (0.00191)
$(p_{ijt-3}/P_{jt-3}) \times \frac{L_{jt}^u}{L_{jt}}$	-0.00176 (0.00135)			-0.00266** (0.00119)		
$(p_{ijt-3}/P_{jt-3}) \times \frac{L_{it}^u}{L_{it}}$	-0.000317 (0.000732)			-0.000119 (0.000546)		
$(p_{ijt-4}/P_{jt-4}) \times \frac{L_{jt}^u}{L_{jt}}$		-0.00165 (0.00148)			-0.00227** (0.00116)	
$(p_{ijt-4}/P_{jt-4}) \times \frac{L_{it}^u}{L_{it}}$		-0.000950 (0.000837)			-0.000464 (0.000595)	
$(p_{ijt-5}/P_{jt-5}) \times \frac{L_{jt}^u}{L_{jt}}$			-0.00129 (0.00151)			-0.00199* (0.00113)
$(p_{ijt-5}/P_{jt-5}) \times \frac{L_{it}^u}{L_{it}}$			0.000347 (0.00101)			0.000544 (0.000711)
Observations	2963	2956	2950	2570	2563	2557
Fixed Effects	Yes	Yes	Yes	Yes	Yes	Yes
M.E. of p/P (Delta Method)	0.00051** (0.00023)	0.00060** (0.00026)	0.00020 (0.00022)	0.00046** (0.00022)	0.00040* (0.00020)	0.00008 (0.00036)
M.E. of $\frac{L_{jt}^u}{L_{jt}}$ (Delta Method)	-0.00449 (0.00704)	-0.00547 (0.00718)	-0.00479 (0.00748)	-0.00025 (0.00490)	-0.00004 (0.00506)	0.00021 (0.00481)
M.E. of $\frac{L_{it}^u}{L_{it}}$ (Delta Method)	-0.00197 (0.00123)	-0.00100 (0.00139)	-0.00302* (0.00154)	-0.00354*** (0.00115)	-0.00305** (0.00119)	-0.00433** (0.00217)
AR(1) p-value	0.000	0.000	0.000	0.000	0.000	0.000
AR(2) p-value	0.042	0.053	0.038	0.709	0.773	0.516
AR(5) p-value	0.509	0.503	0.263	0.587	0.596	0.733
Hansen's oid p-value	1.000	1.000	1.000	1.000	1.000	1.000

Standard errors in parentheses

* $p < 0.10$, ** $p < 0.05$, *** $p < 0.01$

M.E. stands for marginal effect. Standard errors are calculated using the Delta Method.

Figures

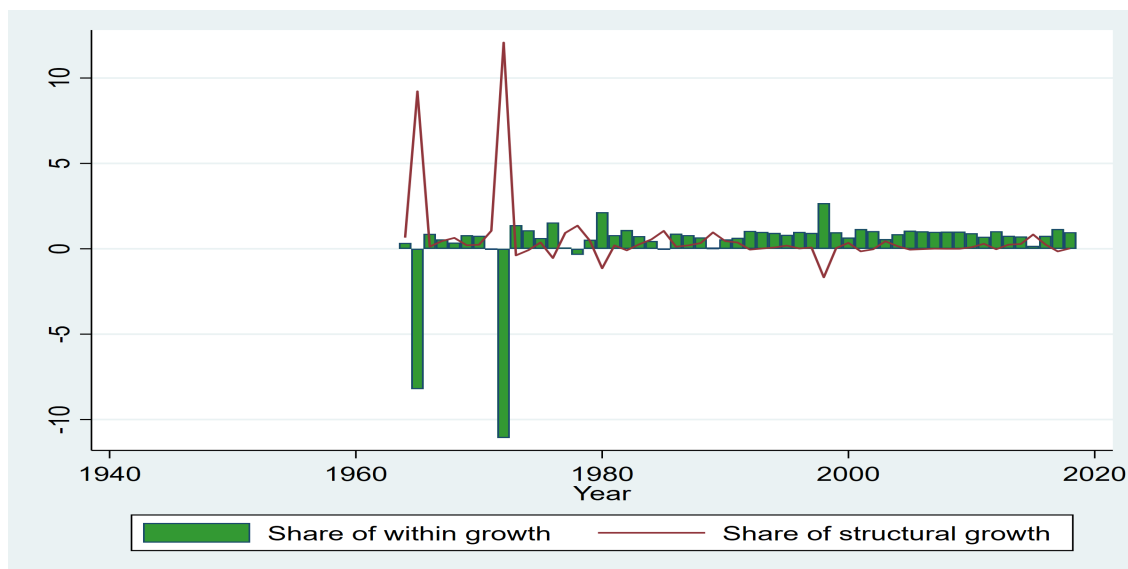


Figure 1: Growth Decomposition for South Korea

(Note: Two extreme years are 1965 and 1972. As the 10-Sector Database ends in 2011, Economic Transformation Database is used since 2012.)

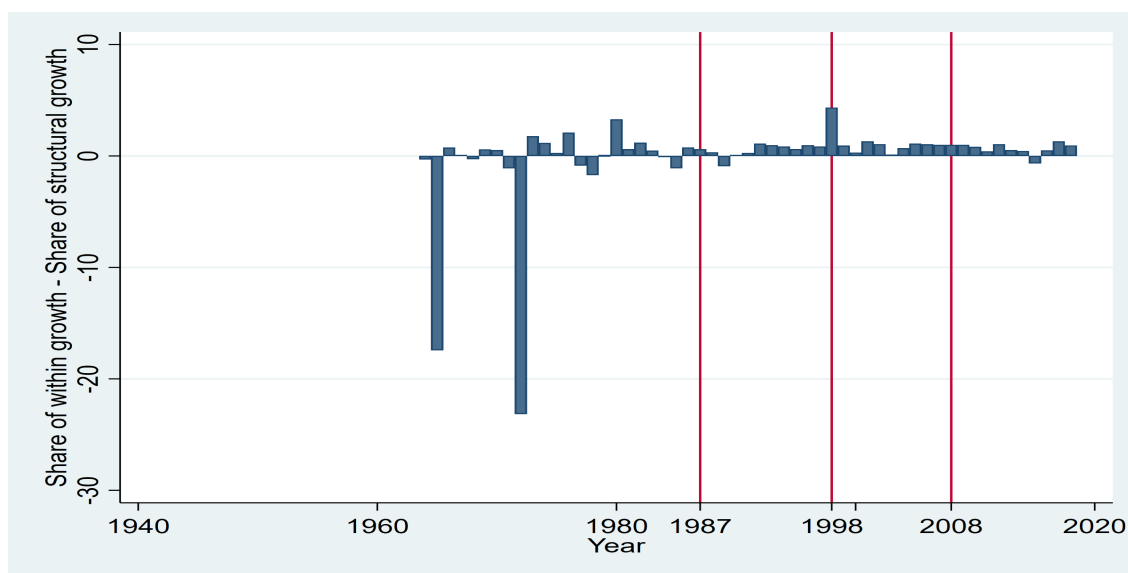


Figure 2: Share of within growth minus share of structural growth in South Korea.

(Note: Two extreme years are 1965 and 1972. The positive value means that the within growth was bigger than the structural growth in according year. Vertical lines indicate democratization (1987), and the 1st (1998) and 2nd (2008) power shifts, respectively.)

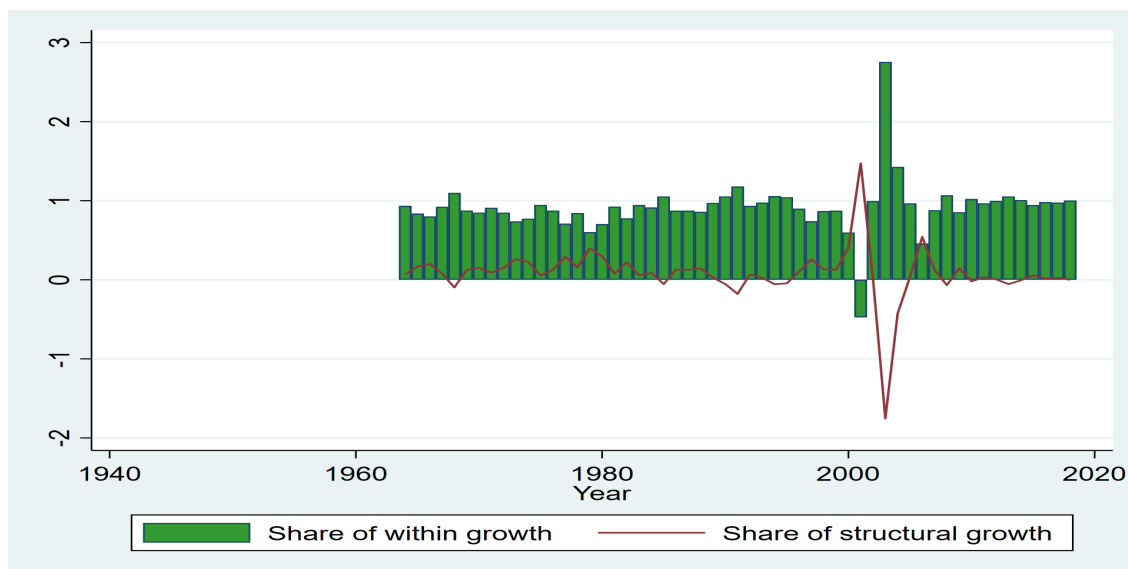


Figure 3: Growth Decomposition for Taiwan

(Note: As the 10-Sector Database ends in 2012, Economic Transformation Database is used since 2013.)

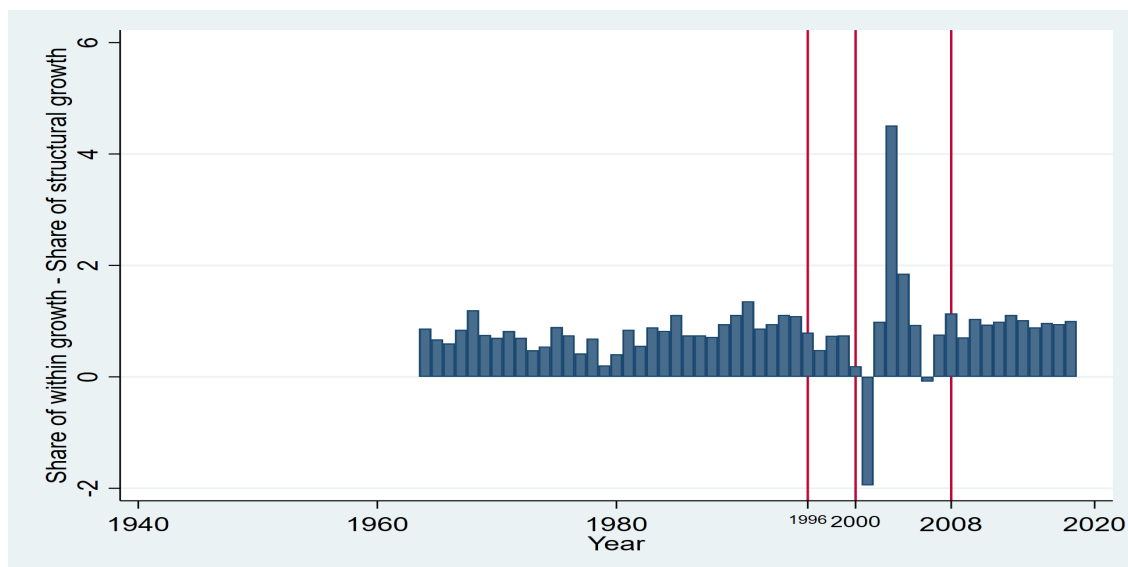


Figure 4: Share of within growth minus share of structural growth in Taiwan.

(Note: The positive value means that the within growth was bigger than the structural growth in according year. Vertical lines indicate democratization (1996), and the 1st (2000) and 2nd (2008) power shifts, respectively.)

Appendix A: Sub-sample Analysis between Before/After Legalization of Democratic Labor Union Confederation

Table A.1: South Korea's 7 sectors in 17 regions (Arellano-Bond estimator using unbalanced panel; Before and after the legalization of KCTU in 1999)

	(1)	(2)	(3)	(4)	(5)	(6)
	$\Delta\theta_{ijt}$	$\Delta\theta_{ijt}$	$\Delta\theta_{ijt}$	$\Delta\theta_{ijt}$	$\Delta\theta_{ijt}$	$\Delta\theta_{ijt}$
	1989 - 1999			2000 - 2019		
$\Delta\theta_{ijt-1}$	0.0483 (0.0433)	0.0733 (0.0522)	0.0615 (0.0664)	0.0798** (0.0324)	0.0809** (0.0323)	0.0838** (0.0330)
p_{ijt-3}/P_{jt-3}	0.00175 (0.00125)			0.00198*** (0.000686)		
p_{ijt-4}/P_{jt-4}		0.000815 (0.000628)			0.00157*** (0.000529)	
p_{ijt-5}/P_{jt-5}			0.00155* (0.000887)			0.00103*** (0.000378)
$Unionize_{ijt}$	-0.00119 (0.00286)	0.00137 (0.00209)	0.000887 (0.00181)	0.00292 (0.00274)	0.00269 (0.00220)	0.00150 (0.00151)
$(p_{ijt-3}/P_{jt-3}) \times Unionize_{ijt}$	-0.00145 (0.00114)			-0.00254 (0.00205)		
$(p_{ijt-4}/P_{jt-4}) \times Unionize_{ijt}$		-0.00130 (0.000889)			-0.00225* (0.00125)	
$(p_{ijt-5}/P_{jt-5}) \times Unionize_{ijt}$			-0.00146* (0.000848)			-0.000987** (0.000398)
Observations	682	580	481	1958	1948	1935
Fixed Effects	Yes	Yes	Yes	Yes	Yes	Yes
M.E. of p/P (Delta Method)	0.00157 (0.00113)	0.00066 (0.00055)	0.00138* (0.00080)	0.00181*** (0.00065)	0.00142*** (0.00048)	0.00096*** (0.00035)
M.E. of $Unionize_{ijt}$ (Delta Method)	-0.00309 (0.00265)	-0.00031 (0.00194)	-0.00098 (0.00189)	-0.00011 (0.00157)	-0.00005 (0.00148)	0.00028 (0.00126)
AR(1) p-value	0.000	0.000	0.000	0.000	0.000	0.000
AR(2) p-value	0.015	0.161	0.606	0.651	0.733	0.790
Hansen's oid p-value	0.998	0.963	0.577	1.000	1.000	1.000

Standard errors in parentheses

* $p < 0.10$, ** $p < 0.05$, *** $p < 0.01$

M.E. stands for marginal effect. Standard errors are calculated using the Delta Method.

Table A.2: Taiwan's 10 sectors in 25 regions. (Arellano-Bond estimator using unbalanced panel; Before and after the legalization of TCTU in 2000)

	(1)	(2)	(3)	(4)	(5)	(6)
	$\Delta\theta_{ijt}$	$\Delta\theta_{ijt}$	$\Delta\theta_{ijt}$	$\Delta\theta_{ijt}$	$\Delta\theta_{ijt}$	$\Delta\theta_{ijt}$
	1992 - 2000			2001 - 2018		
$\Delta\theta_{ijt-1}$	-0.269*** (0.0249)	-0.330*** (0.0267)	-0.351*** (0.0312)	-0.0903*** (0.0157)	-0.0909*** (0.0155)	-0.101*** (0.0170)
$\Delta\theta_{ijt-2}$				-0.101*** (0.0119)	-0.101*** (0.0120)	-0.110*** (0.0139)
$\Delta\theta_{ijt-3}$				-0.0679*** (0.0139)	-0.0680*** (0.0146)	-0.0755*** (0.0152)
$\Delta\theta_{ijt-4}$				-0.0138** (0.00582)	-0.0137** (0.00583)	-0.0597*** (0.0166)
p_{ijt-3}/P_{jt-3}	0.00375* (0.00227)			0.000396*** (0.000134)		
p_{ijt-4}/P_{jt-4}		0.00590 (0.00397)			0.000433*** (0.000152)	
p_{ijt-5}/P_{jt-5}			-0.00840** (0.00357)			0.000404** (0.000197)
$Unionize_{ijt}$	-0.00240 (0.00178)	-0.00245 (0.00178)	-0.00397 (0.00281)	-0.000199 (0.000128)	-0.000194* (0.000107)	-0.000272** (0.000131)
$(p_{ijt-3}/P_{jt-3}) \times Unionize_{ijt}$	-0.000484 (0.000869)			-0.000160** (0.0000656)		
$(p_{ijt-4}/P_{jt-4}) \times Unionize_{ijt}$		-0.001000 (0.00161)			-0.000207*** (0.0000555)	
$(p_{ijt-5}/P_{jt-5}) \times Unionize_{ijt}$			0.000714 (0.00152)			-0.000253*** (0.0000941)
Observations	630	515	391	2548	2533	2522
Fixed Effects	Yes	Yes	Yes	Yes	Yes	Yes
M.E. of p/P (Delta Method)	0.00353 (0.00226)	0.00541 (0.00397)	-0.00799** (0.00342)	0.00032** (0.00012)	0.00034 (0.00310)	0.00030 (0.01028)
M.E. of $Unionize_{ijt}$ (Delta Method)	-0.00304* (0.00166)	-0.00380 (0.00268)	-0.00299 (0.00322)	-0.00037*** (0.00011)	-0.00042 (0.00201)	-0.00055 (0.00790)
AR(1) p-value	0.000	0.000	0.000	0.000	0.000	0.000
AR(2) p-value	0.050	0.066	0.729	0.357	0.387	0.248
AR(5) p-value				0.577	0.579	0.672
Hansen's oid p-value	0.001	0.000	0.000	1.000	1.000	0.000

Standard errors in parentheses

* $p < 0.10$, ** $p < 0.05$, *** $p < 0.01$

M.E. stands for marginal effect. Standard errors are calculated using the Delta Method.

Appendix B: Details on Estimations in Section 8 (Discussion)

Estimation equation below estimates whether a unionization of each region ($\frac{L_{jt}^u}{L_{jt}}$) can explain each region's structural growth component.

$$StructG_{jt} = \alpha_0 + \alpha_1 \frac{L_{jt-b}^u}{L_{jt-b}} + \mu_j + \lambda_t + \nu_{jt} \quad (6)$$

where $StructG_{jt}$ is the structural growth term ($\sum_i^I p_{ij,t} \Delta \theta_{ij,t}$) of regional growth decomposition. μ_j and λ_t represent the region-specific and year-specific effects, respectively. To relieve the possible endogeneity issue, the regional level unionization is lagged with enough gaps ($4 \leq b \leq 6$). In addition, if we replace $StructG_{jt}$ with $WithinG_{jt}$ which stands for the within growth component $\sum_i^I \theta_{ij,t-1} \Delta p_{ij,t}$, we have a symmetric equation below.

$$WithinG_{jt} = \alpha_0 + \alpha_1 \frac{L_{jt-b}^u}{L_{jt-b}} + \mu_j + \lambda_t + \nu_{jt} \quad (7)$$

Table B.1 and B.2 include consequent estimation results for the South Korean economy and the Taiwanese economy, respectively. The three left hand side columns of Tables B.1 and B.2 are estimation results from equation (6). The three right hand side columns are estimation results from equation (7). The differences in magnitudes in the estimated coefficients between Tables B.1 and B.2 come from the local currency of the two nations. The real value-added for retrieving the productivity is represented by the local currency in millions (Won in South Korea and Taiwan Dollar in Taiwan). We can clearly see that, in Table B.1, regional lagged unionization is negatively correlated with the magnitude of structural growth in South Korea. An inverse relationship is found between the within growth component and regional unionization. However, according to Table B.2, there is no statistically significant relationship between decomposed growth and regional unionization in Taiwan.

Table B.1: Geographically decomposed growth and unionization in South Korea, 1989-2019

	(1)	(2)	(3)	(4)	(5)	(6)
	<i>StructG_{jt}</i>	<i>StructG_{jt}</i>	<i>StructG_{jt}</i>	<i>WithinG_{jt}</i>	<i>WithinG_{jt}</i>	<i>WithinG_{jt}</i>
L_{jt-4}^u/L_{jt-4}	-11931.8** (4657.8)			10828.1 (6929.8)		
L_{jt-5}^u/L_{jt-5}		-15391.1*** (4877.6)			17174.9** (7271.6)	
L_{jt-6}^u/L_{jt-6}			-13511.5*** (5109.1)			23717.7*** (7504.6)
Constant	186.6 (609.2)	746.6 (627.4)	865.9 (650.5)	1461.7 (906.3)	913.0 (935.3)	1121.7 (955.5)
Observations	358	341	324	358	341	324
Fixed Effects	Yes	Yes	Yes	Yes	Yes	Yes

Standard errors in parentheses

* $p < 0.10$, ** $p < 0.05$, *** $p < 0.01$

Table B.2: Geographically decomposed growth and unionization in Taiwan, 1992-2018

	(1)	(2)	(3)	(4)	(5)	(6)
	<i>StructG_{jt}</i>	<i>StructG_{jt}</i>	<i>StructG_{jt}</i>	<i>WithinG_{jt}</i>	<i>WithinG_{jt}</i>	<i>WithinG_{jt}</i>
L_{jt-4}^u/L_{jt-4}	14.39 (38.37)			-76.59 (145.9)		
L_{jt-5}^u/L_{jt-5}		5.916 (42.72)			-118.4 (162.1)	
L_{jt-6}^u/L_{jt-6}			52.81 (47.98)			-111.1 (182.1)
Constant	0.973 (18.43)	0.0568 (20.21)	-17.73 (22.35)	56.73 (70.08)	63.37 (76.66)	57.55 (84.81)
Observations	340	314	288	340	314	288
Fixed Effects	Yes	Yes	Yes	Yes	Yes	Yes

Standard errors in parentheses

* $p < 0.10$, ** $p < 0.05$, *** $p < 0.01$